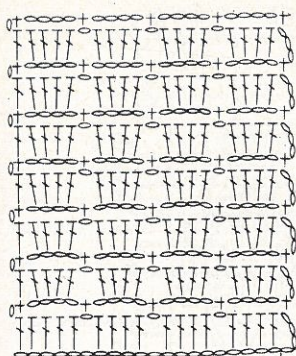


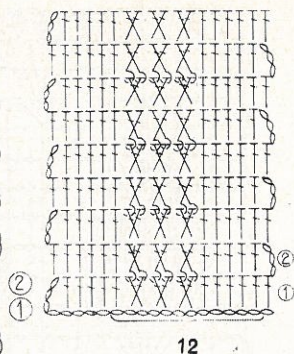
PUNTI OPERATI ALL'UNCINETTO

383



5

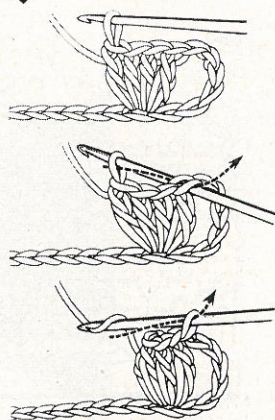
384



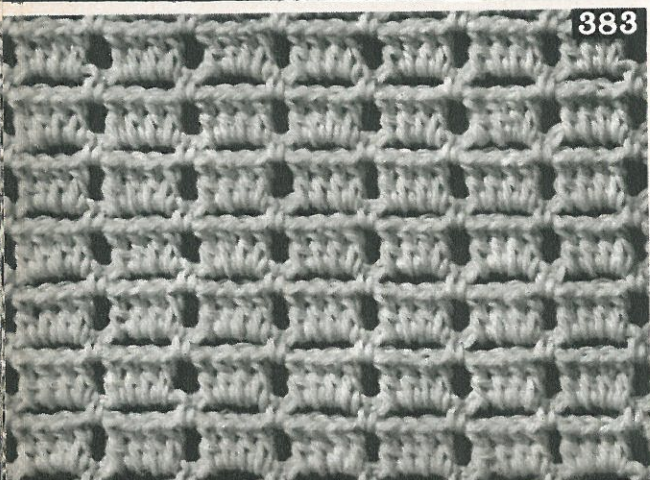
12



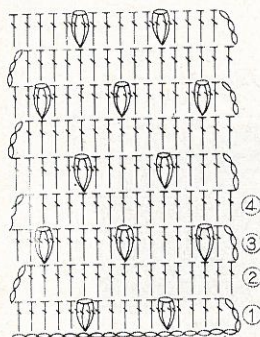
Punto popcorn



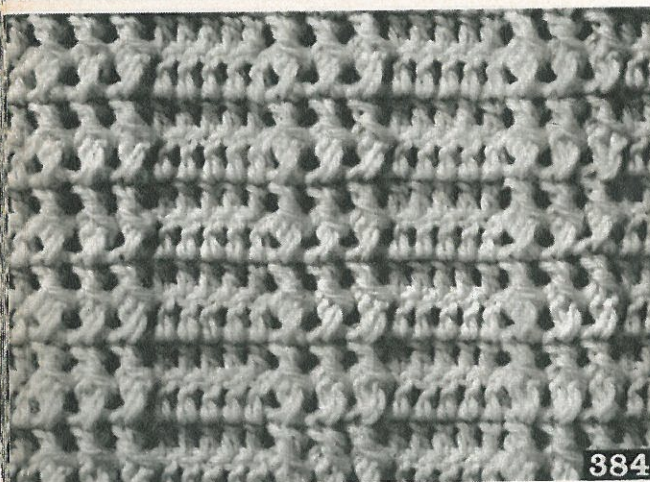
383



385

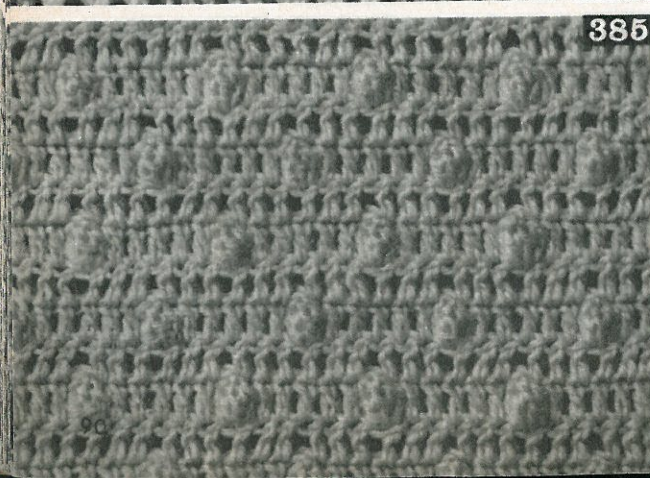


6

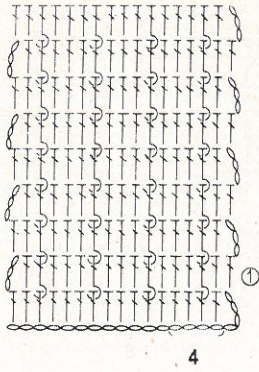


384

385

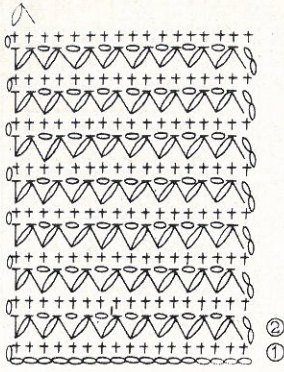


386



4

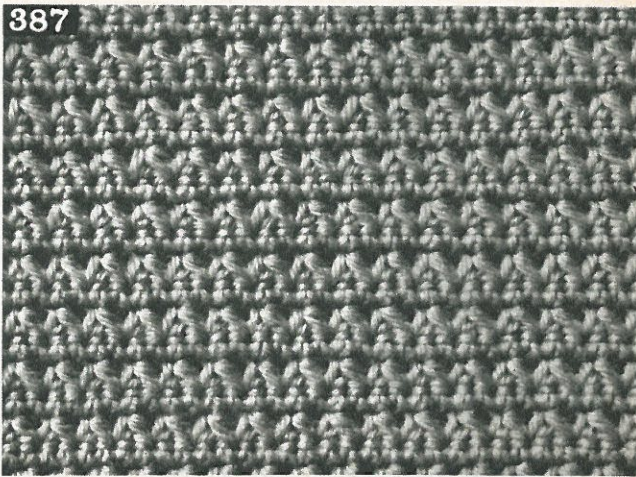
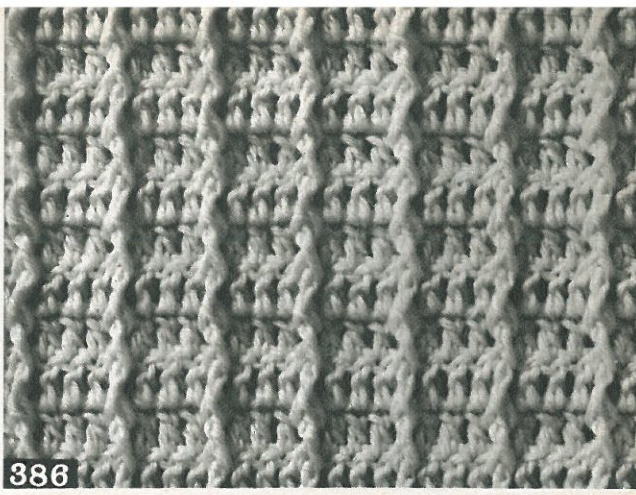
387 chiudere ins. 1 mezza m. alta e 1 cat. vol.



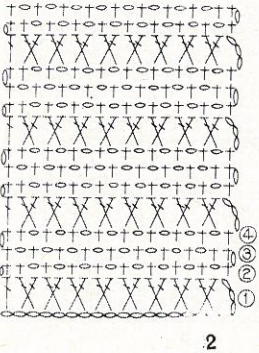
2

386

387

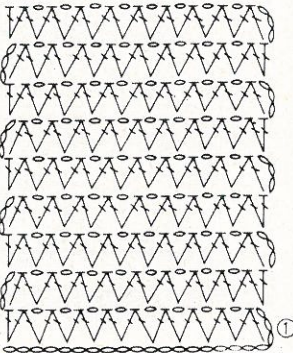


388



2

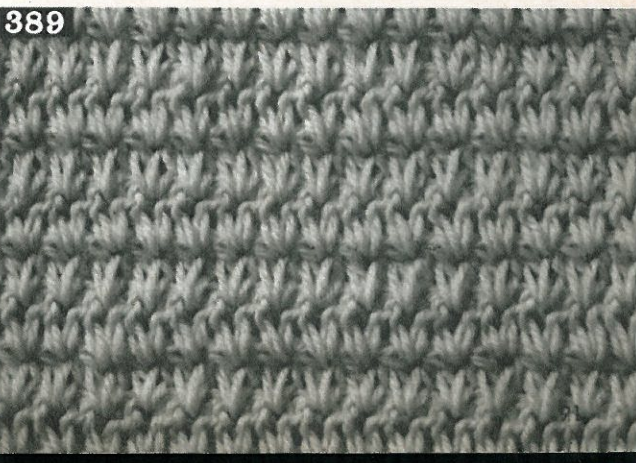
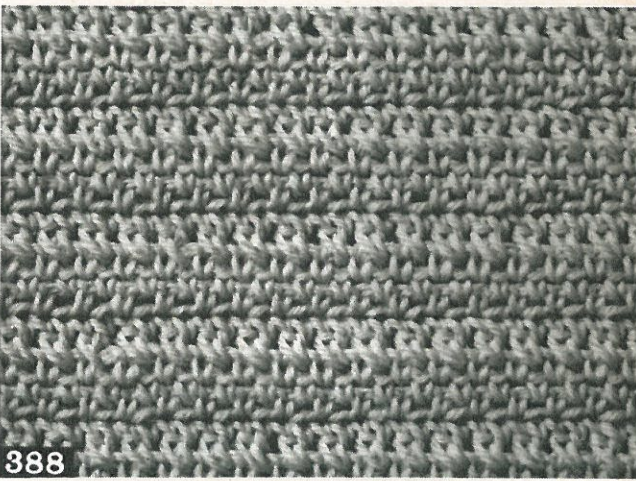
389

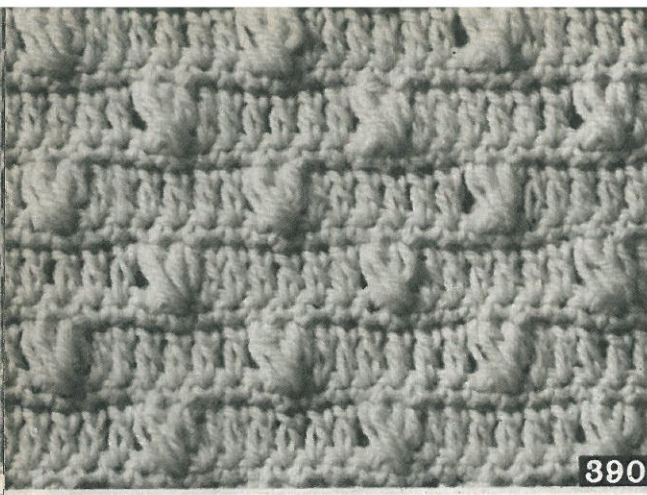


2

388

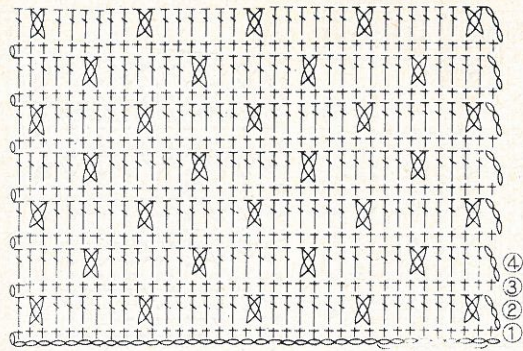
389



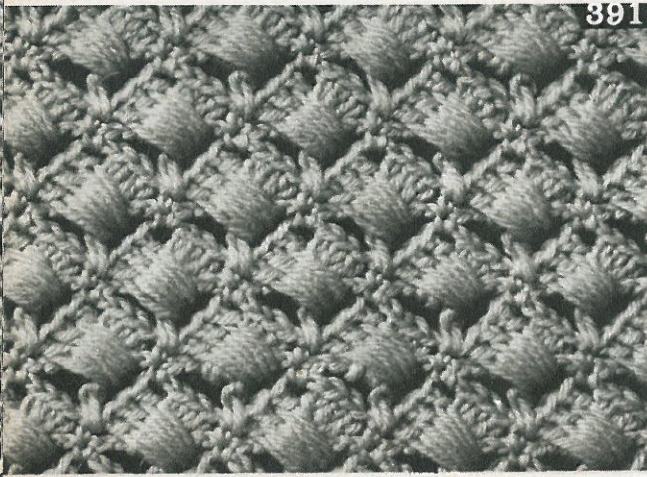


390

390

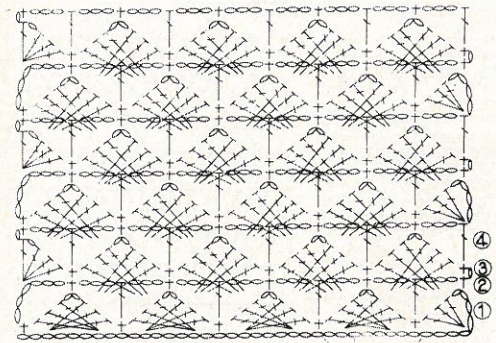


8

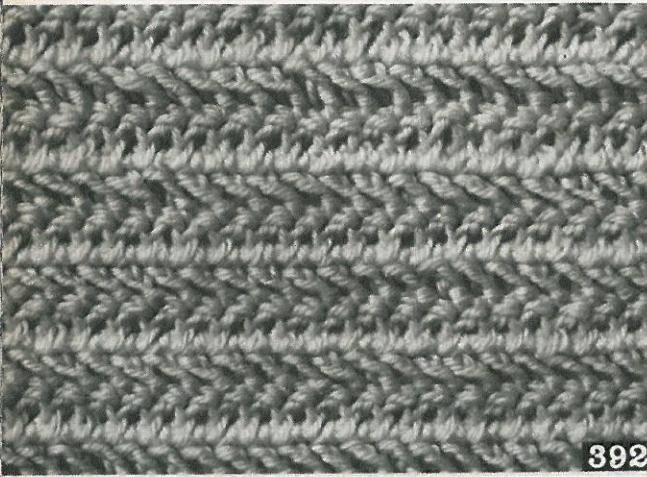


391

391

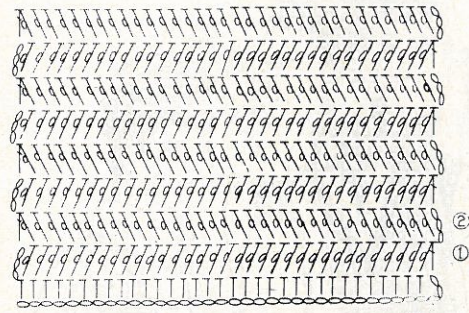


8



392

392 ved. pag. 234

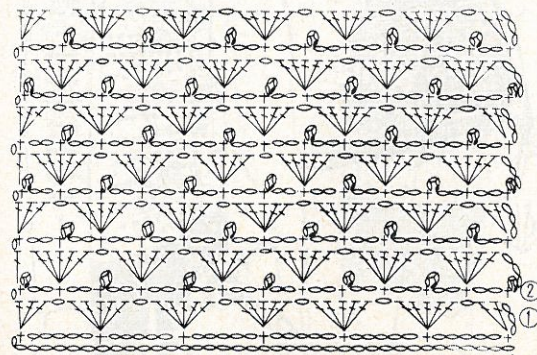


2



393

393

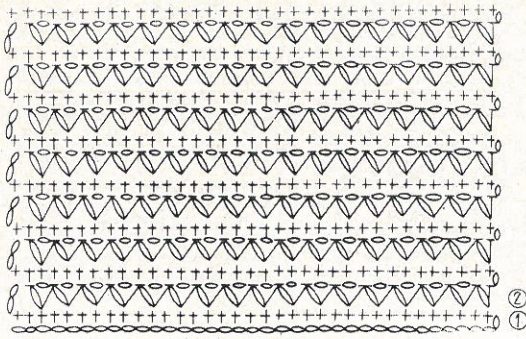


6

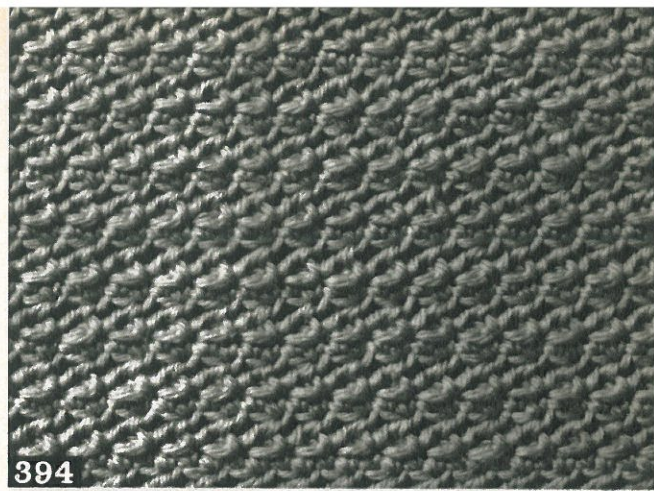
La spiegazione dei segni usati in questi dis. si trova da pag. 231 a pag. 242.

394

Chiudere ins. 1 cat. vol.
e 1 mezza m. alta

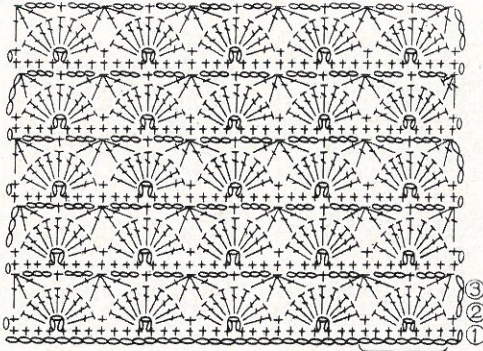


2

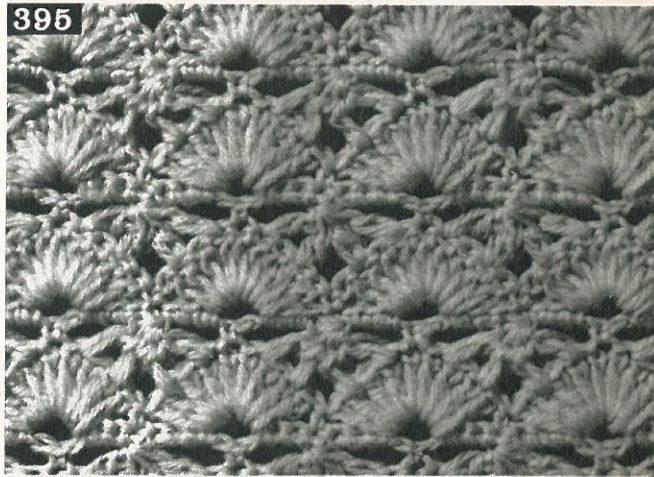


394

395



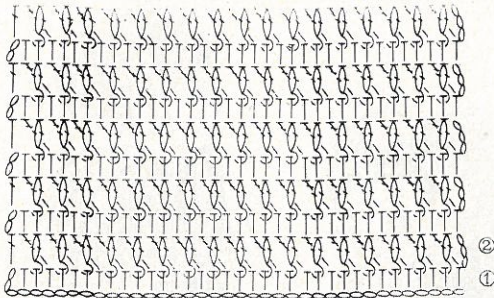
7



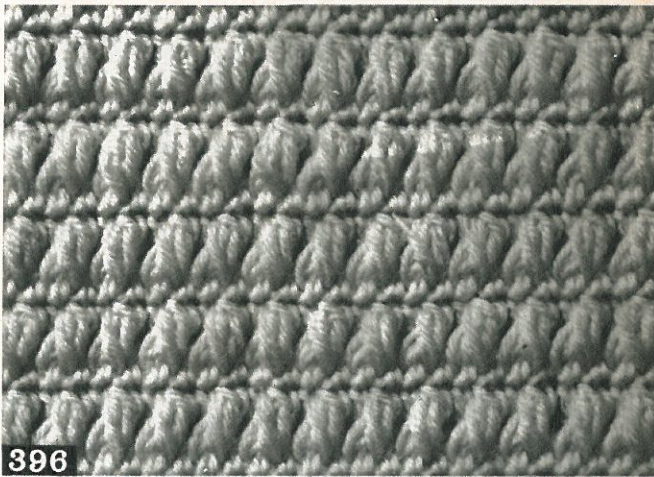
395

396

Incrociare 1 m. alta dietro 1 punto soff.
di 2 m. alte in rilievo

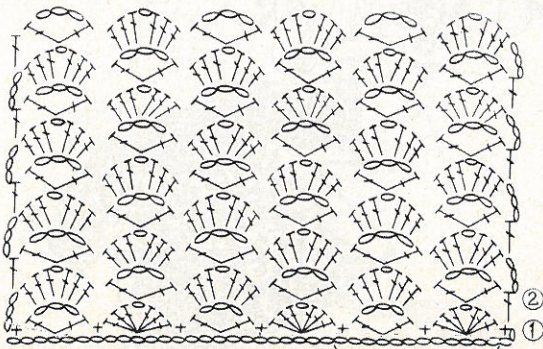


2

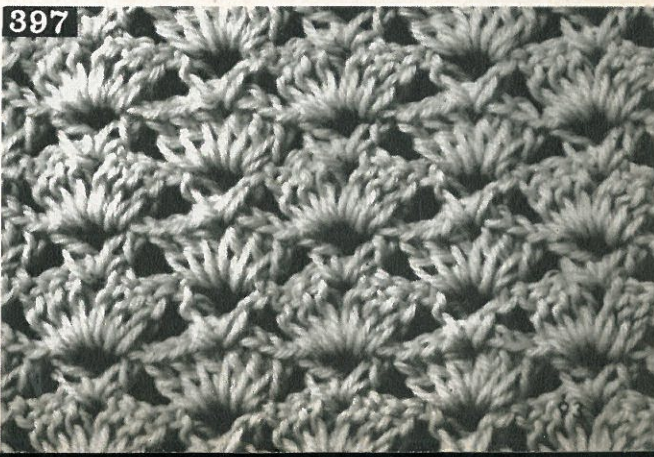


396

397



12



397



398



399

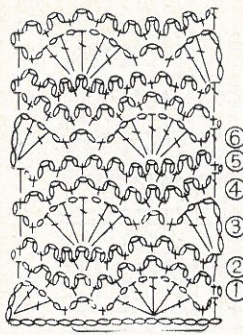


400



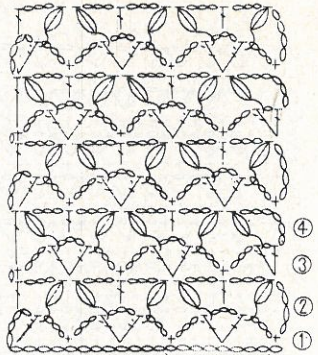
401

398



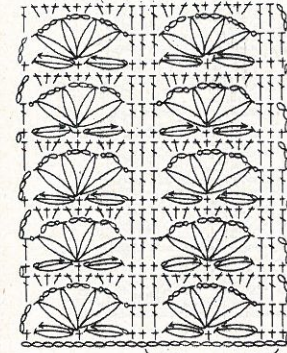
11

399



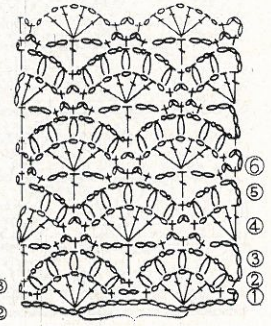
8

400



12

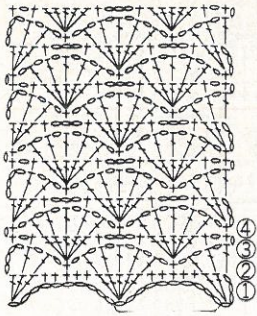
401



11

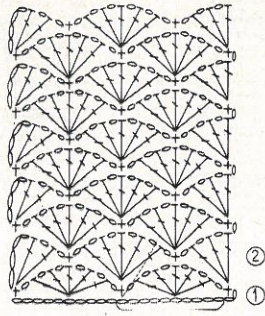


402



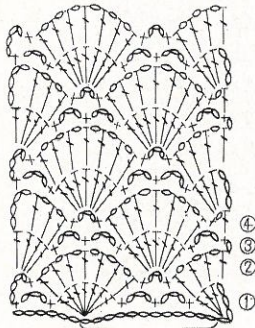
10

403



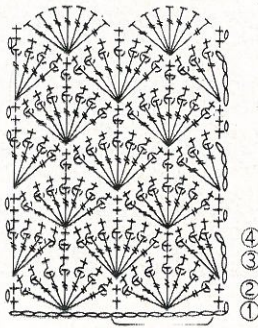
10

404



12

405



8



402



403



404

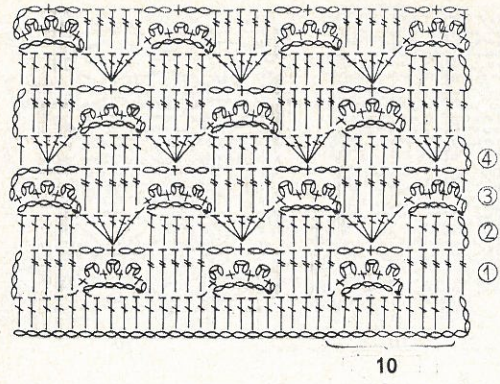


405



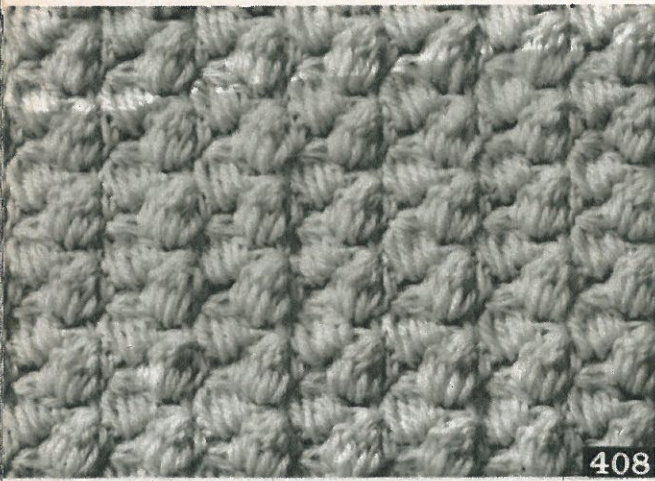
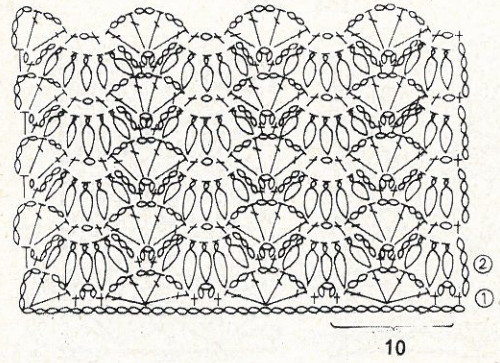
406

406



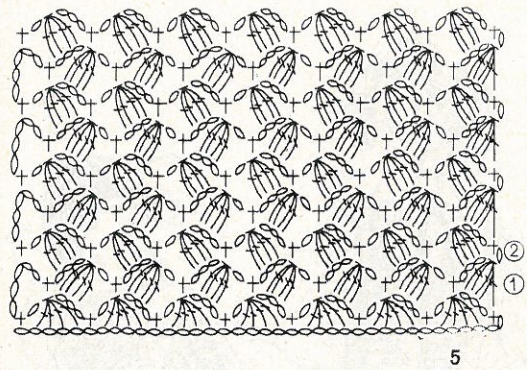
407

407



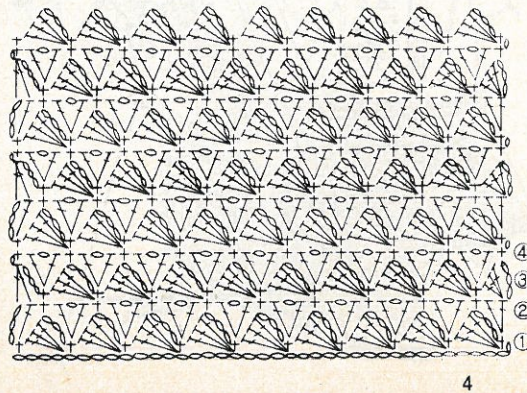
408

408

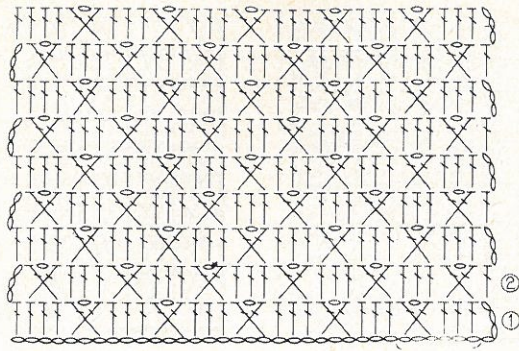


409

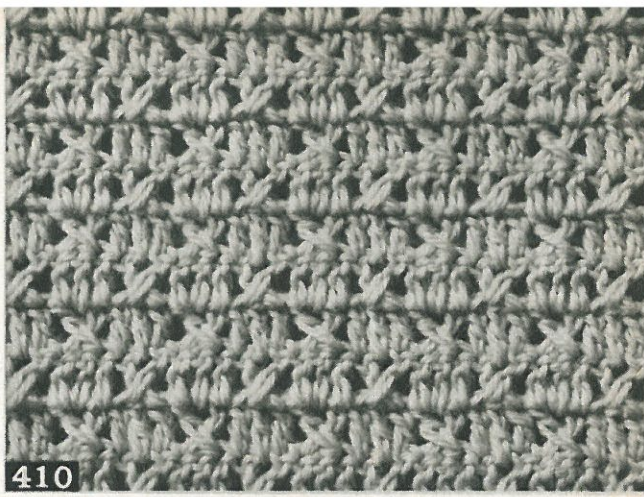
409



410

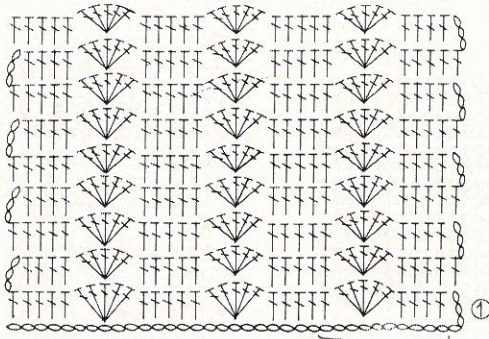


6

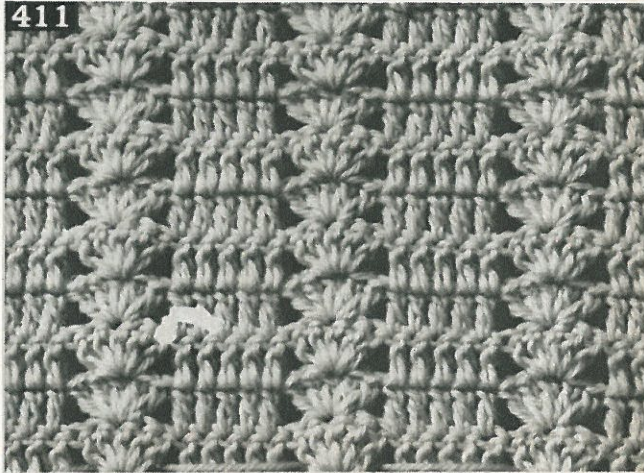


410

411

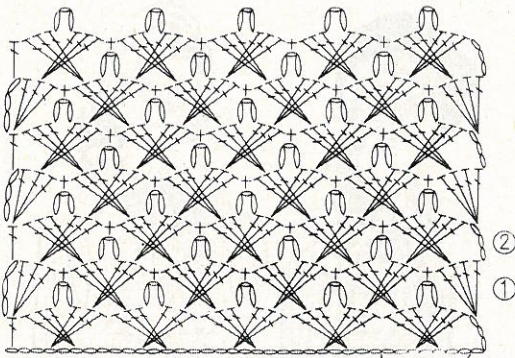


10

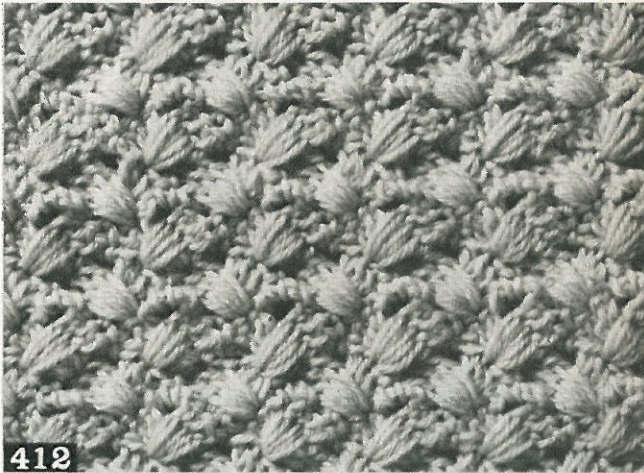


411

412

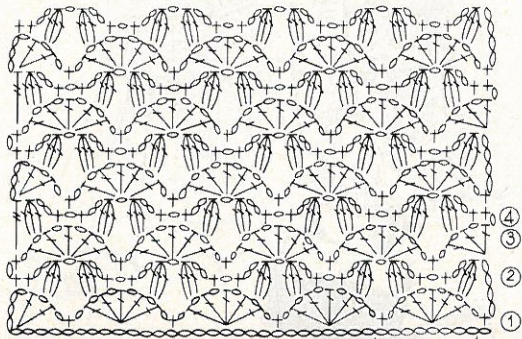


7

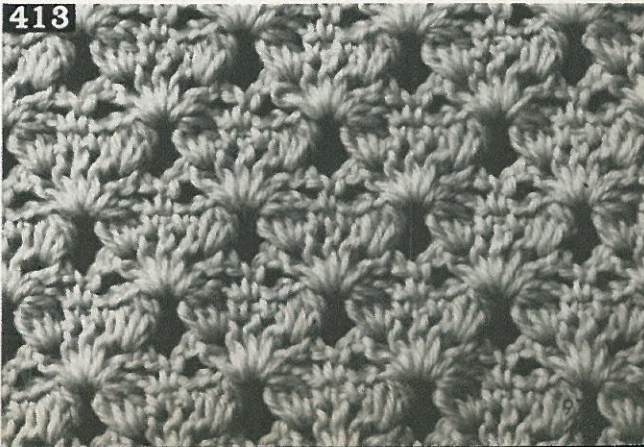


412

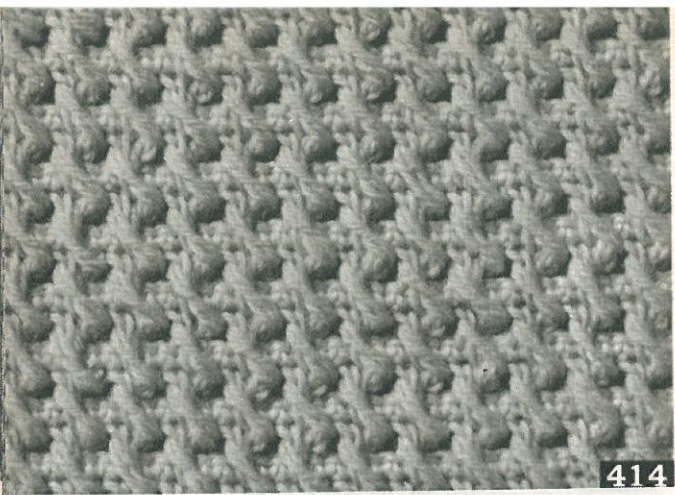
413



8

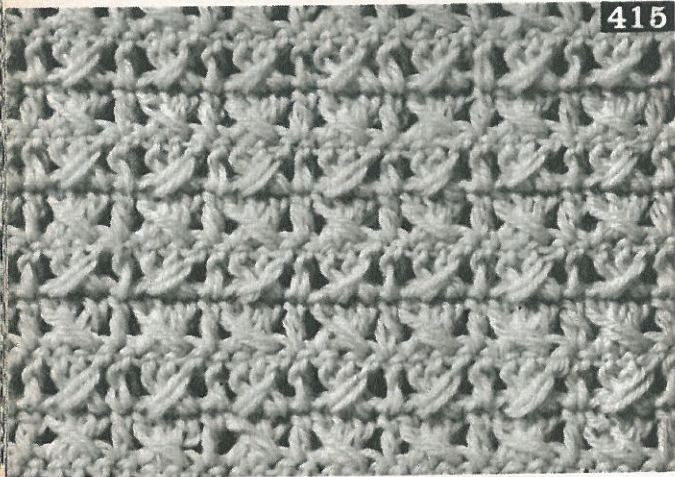
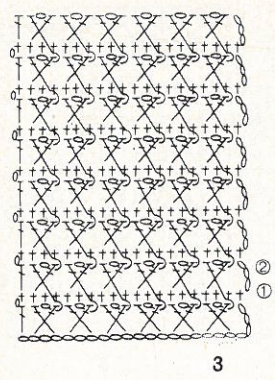


413



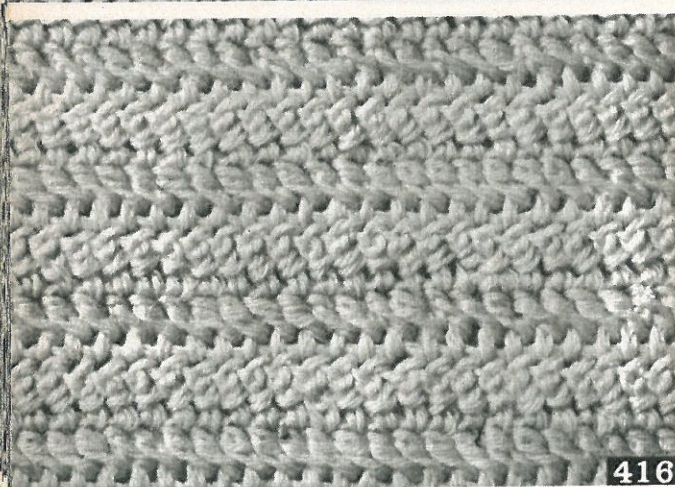
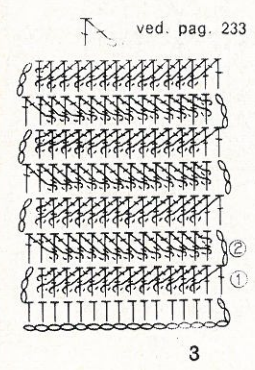
414

414



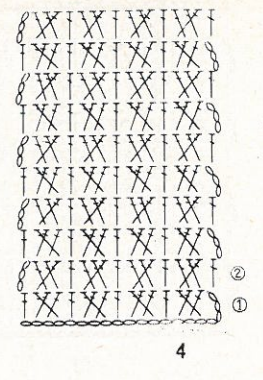
415

416



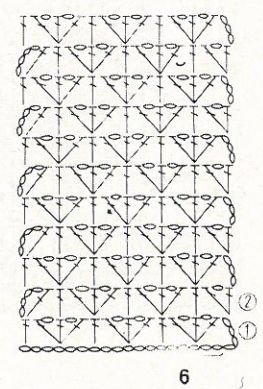
416

415

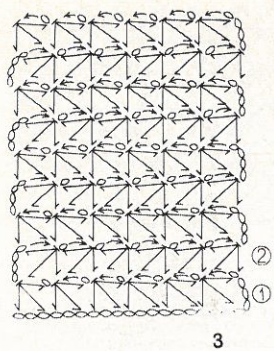


417

417

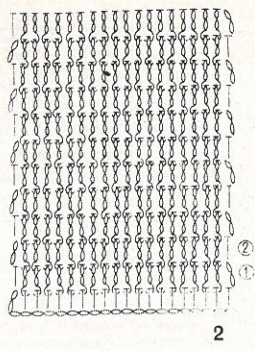


418



3

419

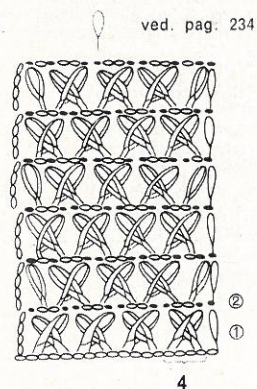


2

418

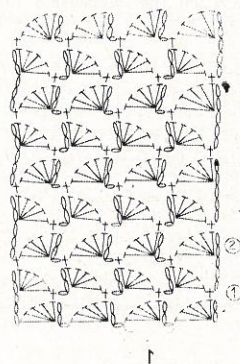
419

420



4

421



1

420

421

