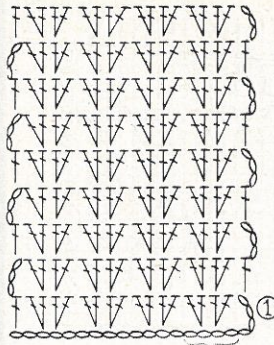


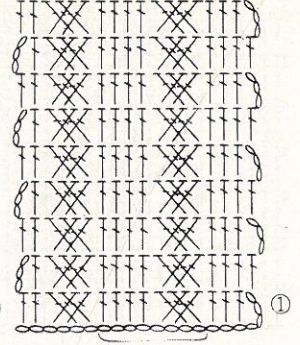
510

510

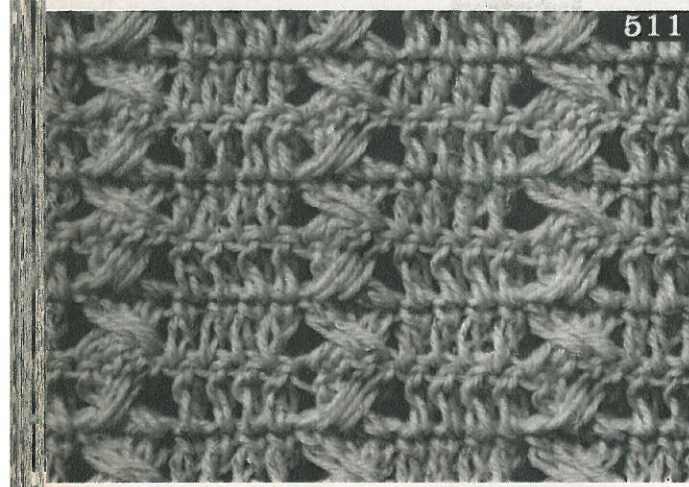


4

511

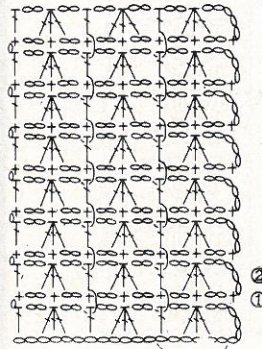


8



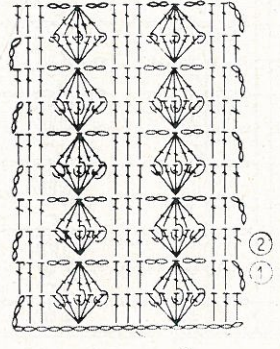
511

512

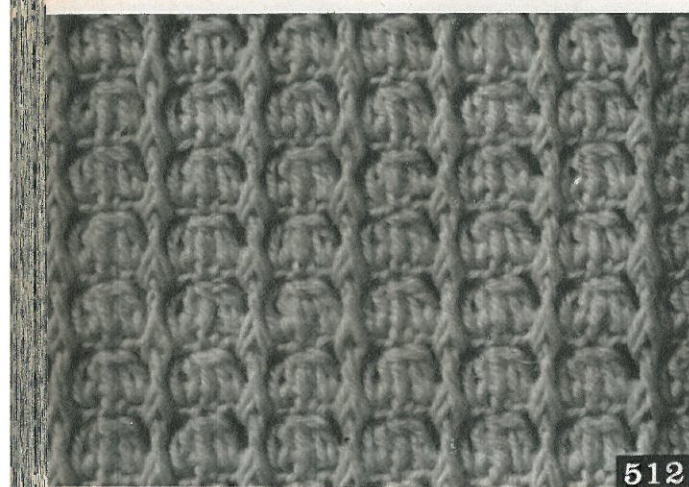


6

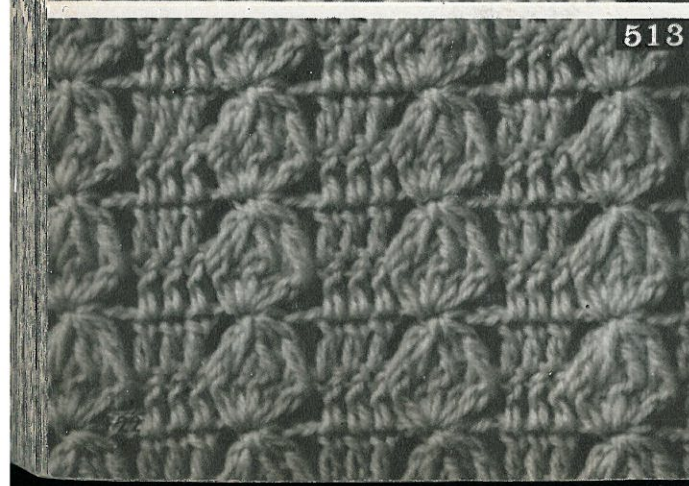
513



8



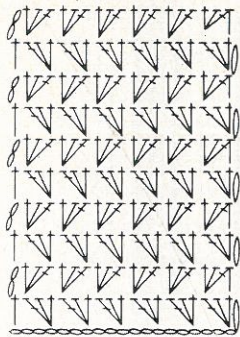
512



513

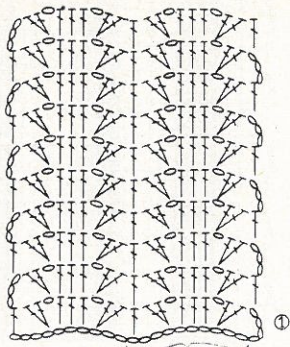


514



3

515

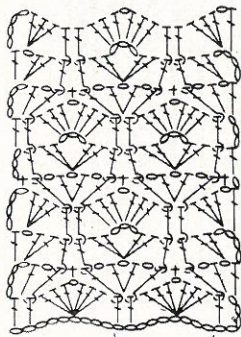


10

514

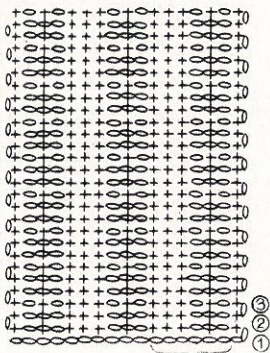


516



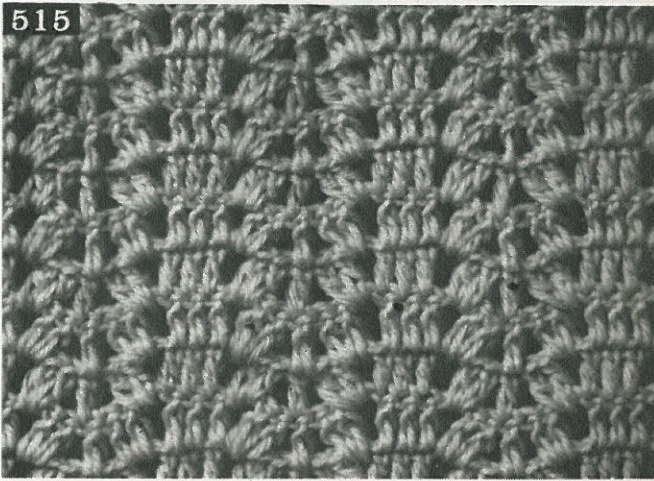
9

517



6

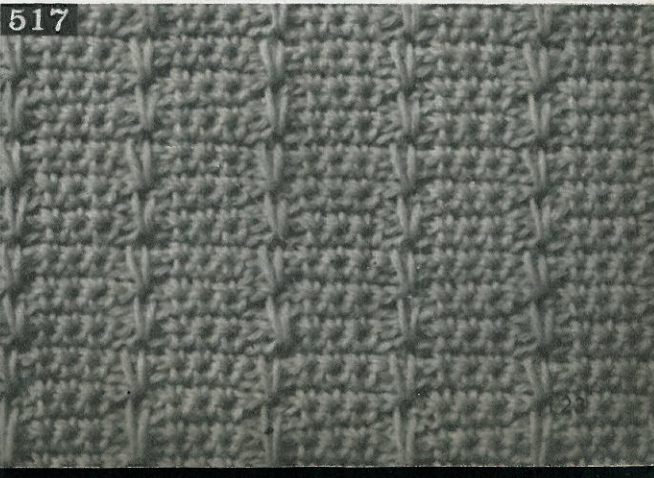
515

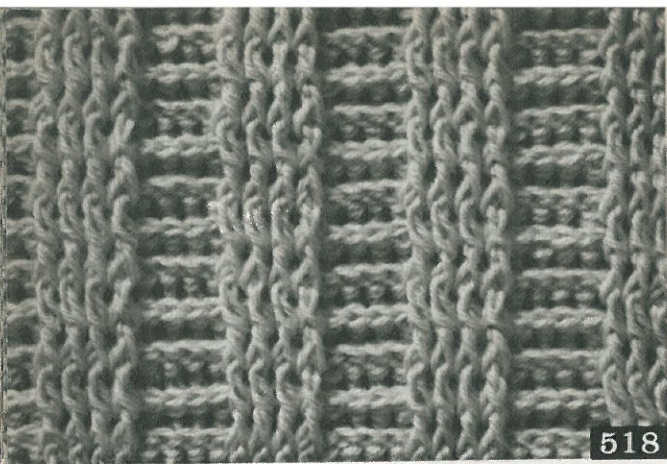


516

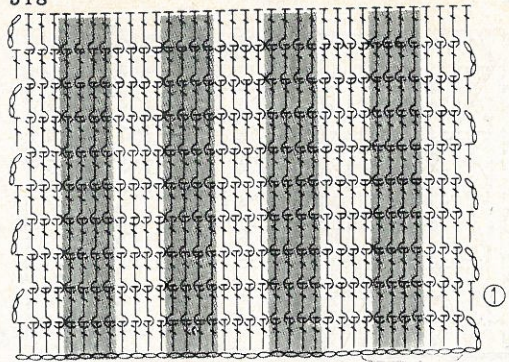


517

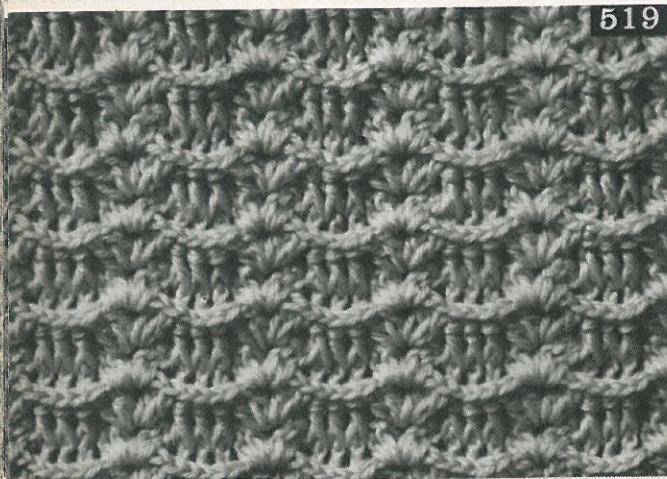




518

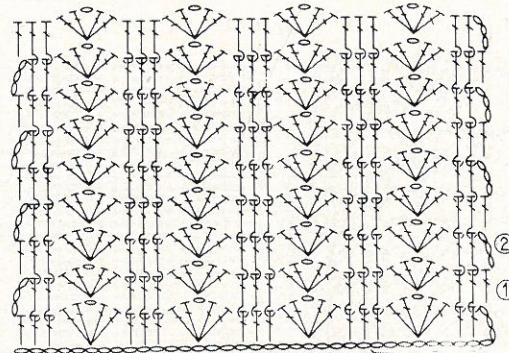


8

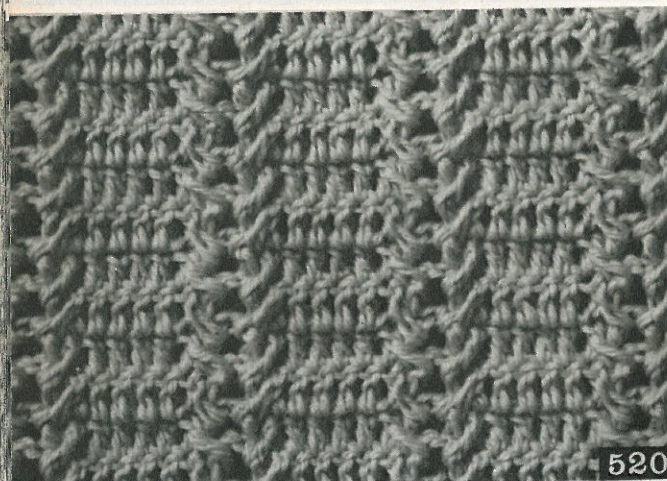


519

519

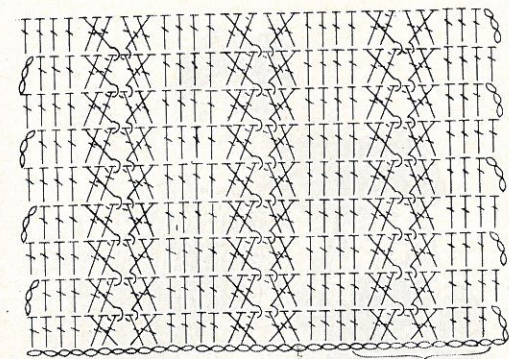


8



520

520

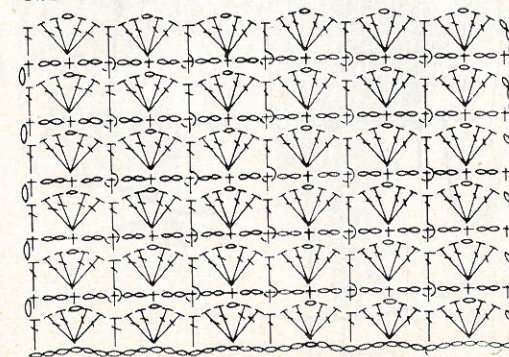


10



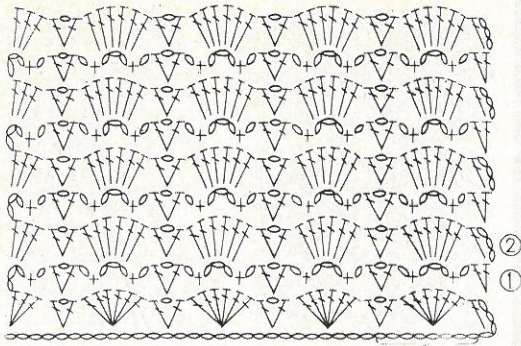
521

521



6

522

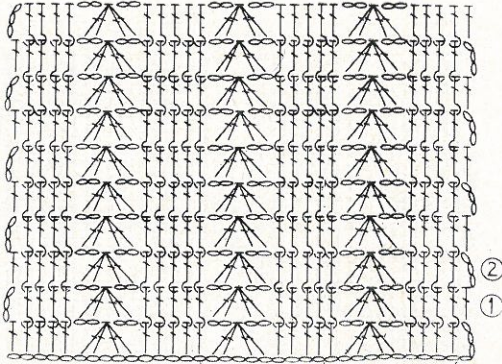


8

522

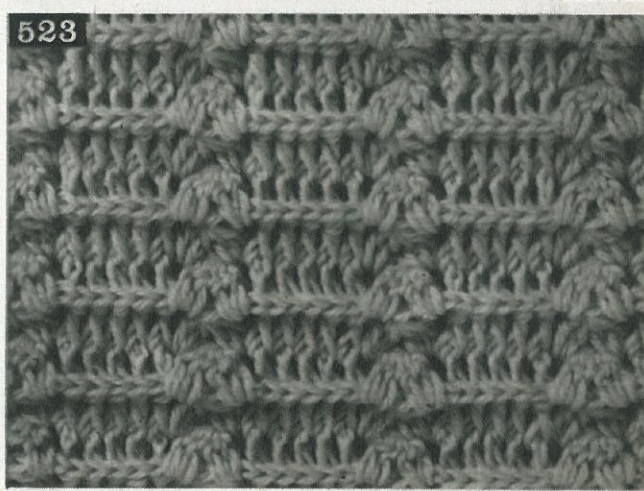


523

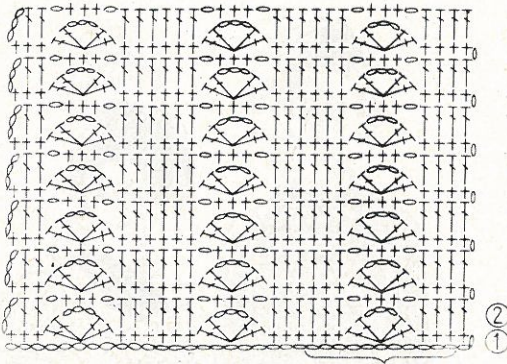


10

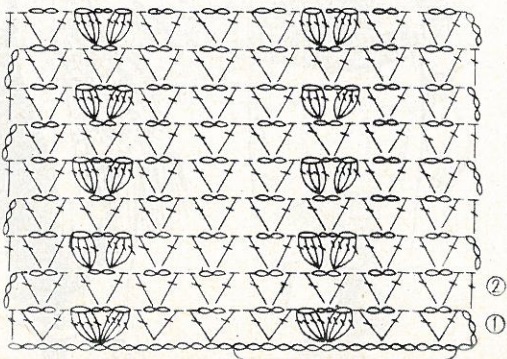
523



524



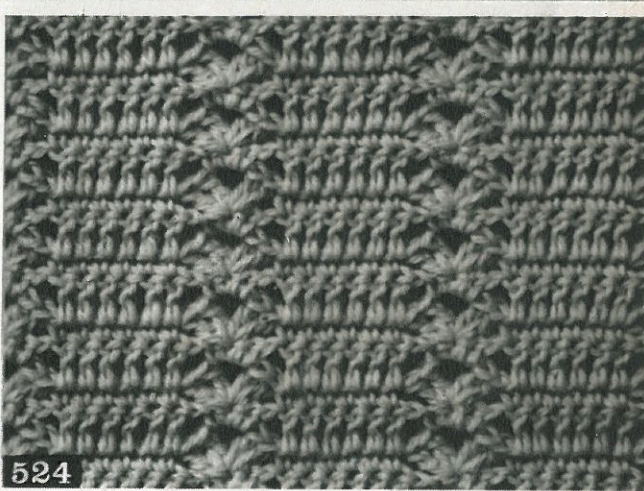
525



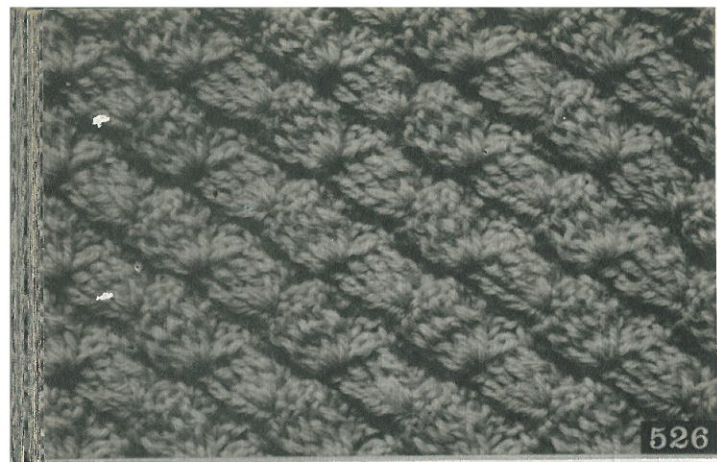
16

524

525



La spiegazione dei segni usati in questi dis. si trova da pag. 231 a pag. 242.



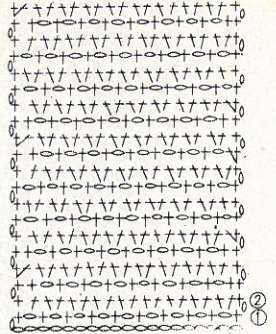
526

526

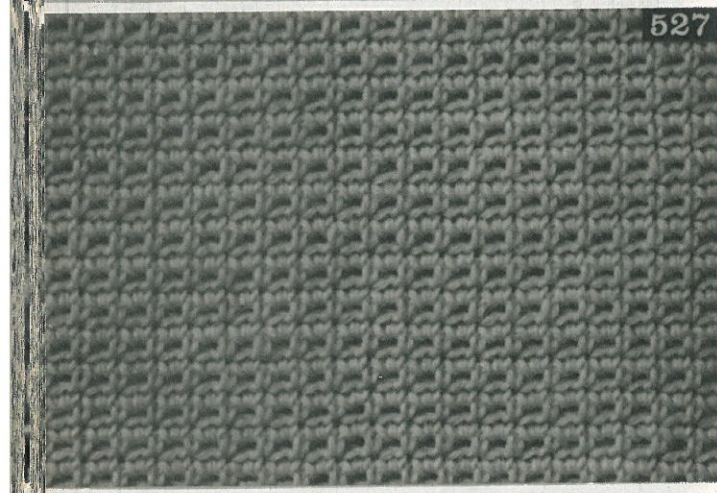


7

527

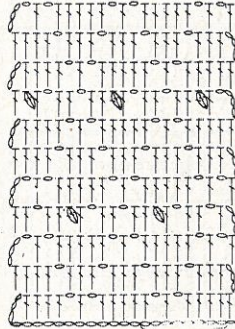


2



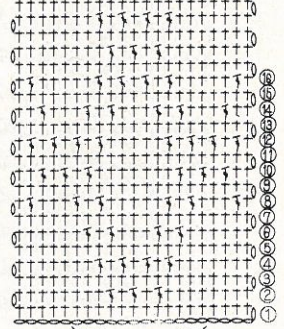
527

528

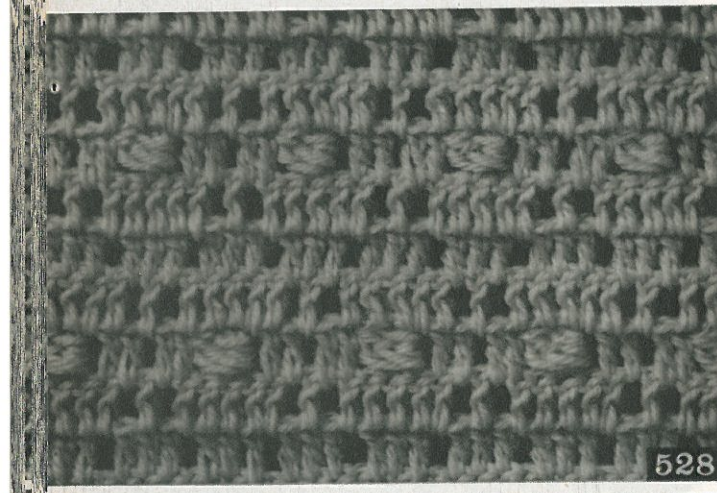


8

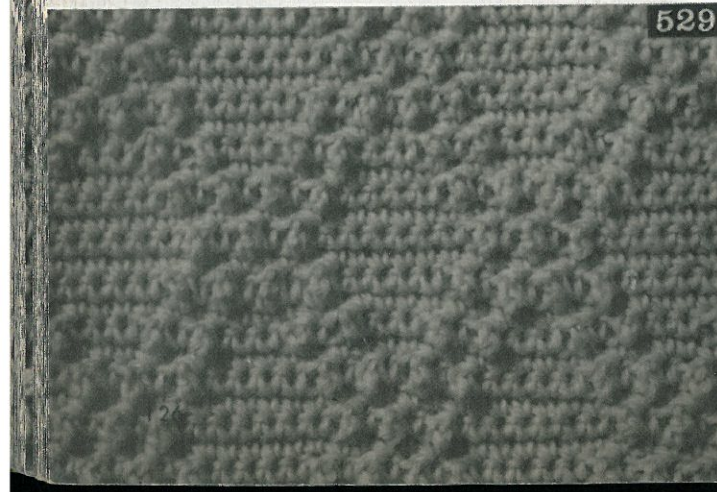
529



12



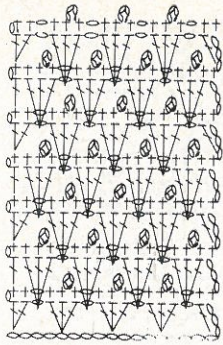
528



529

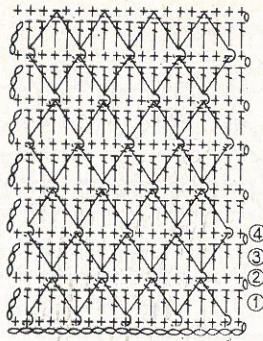


530



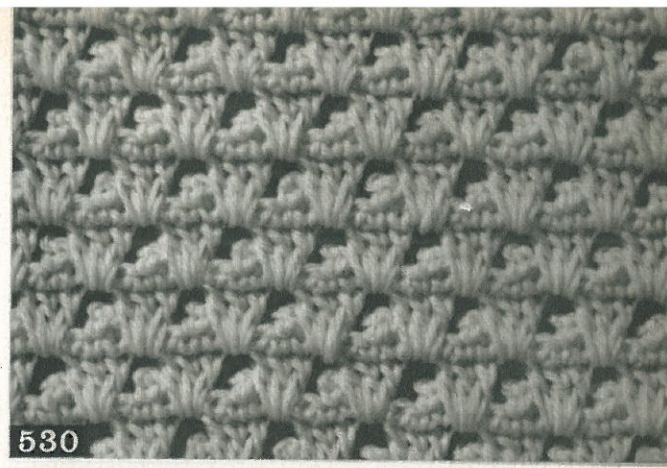
4

531

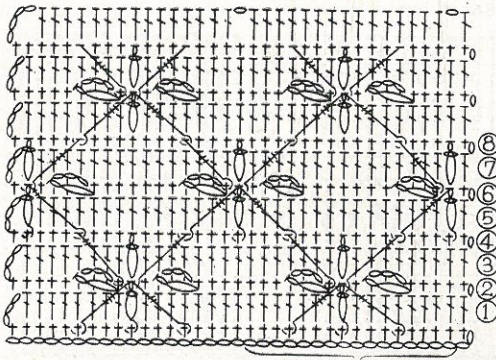


4

530



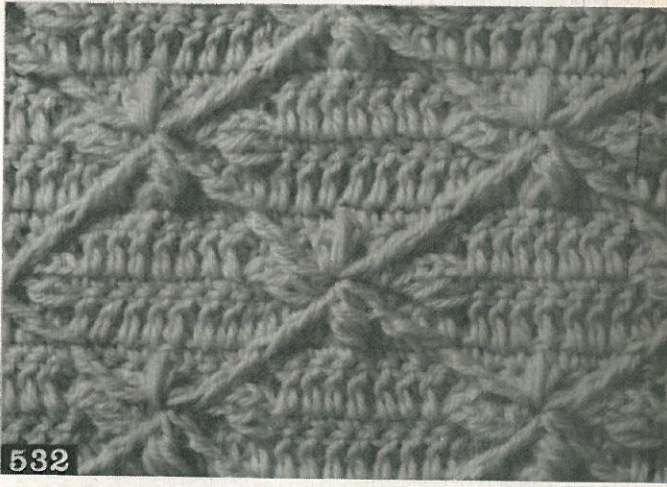
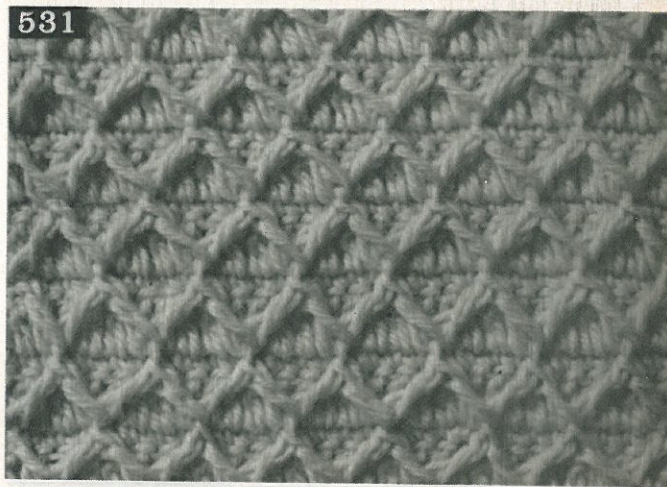
532



16

533 Ved. dis. a pag. 224

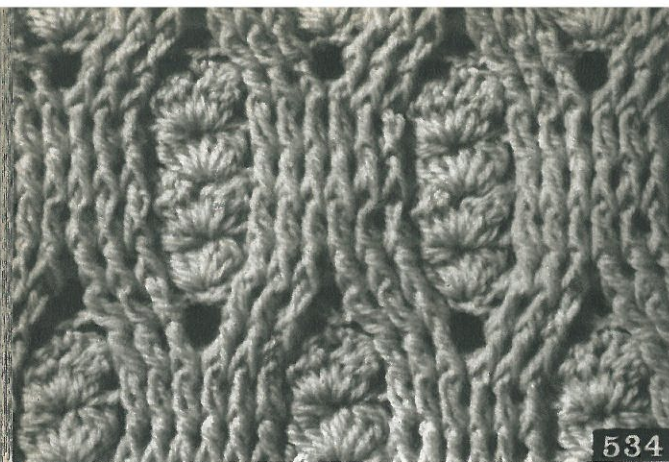
531



532

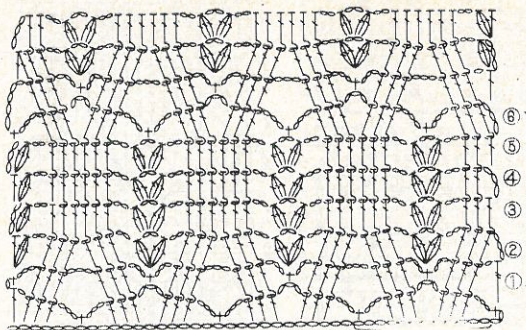
533



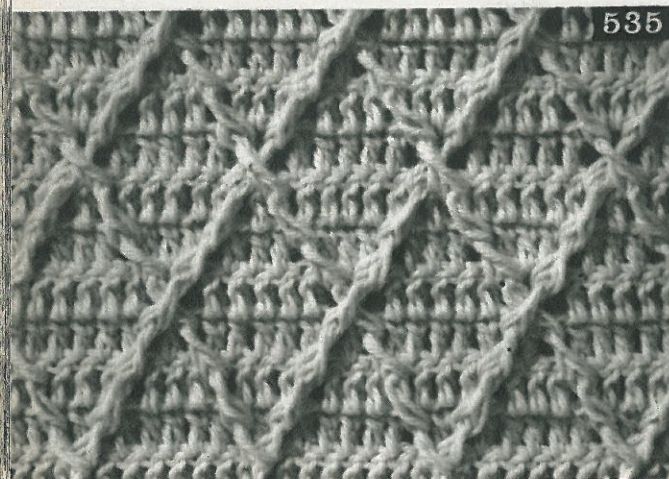


534

534

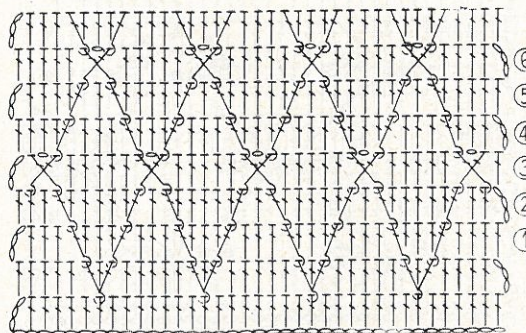


12

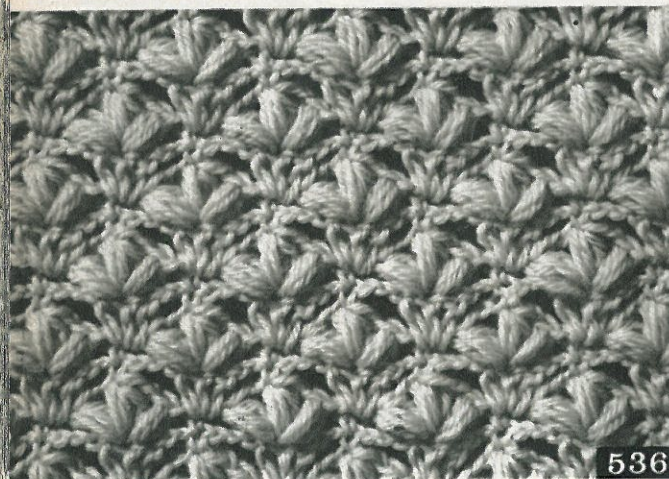


535

535



8

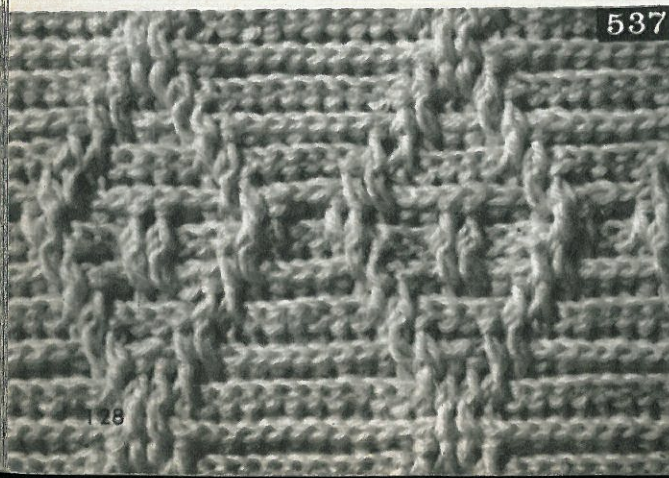


536

536

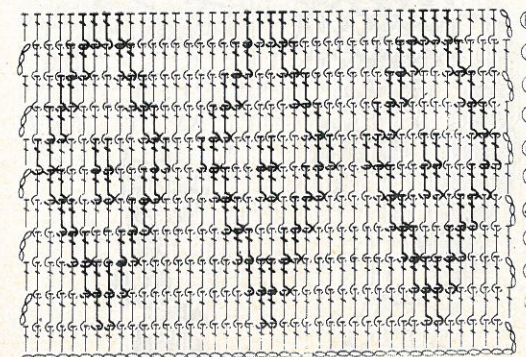


6



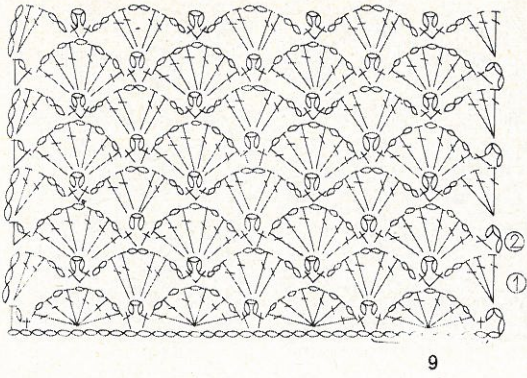
537

537

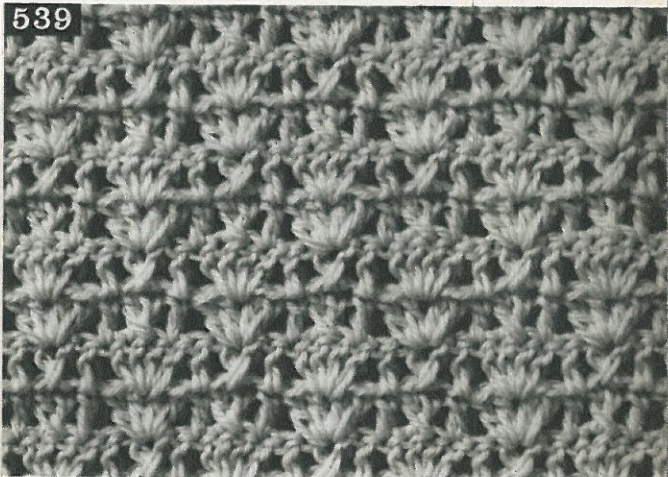
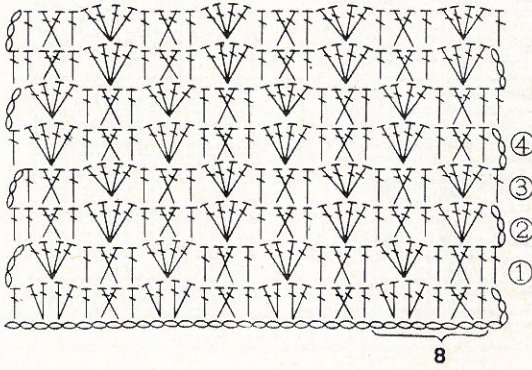


14

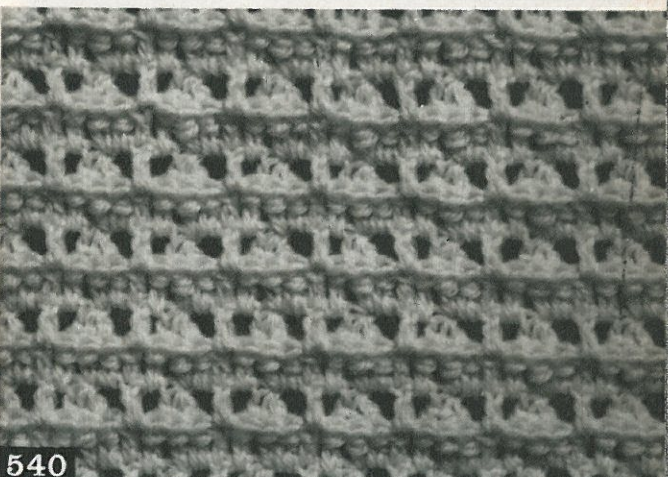
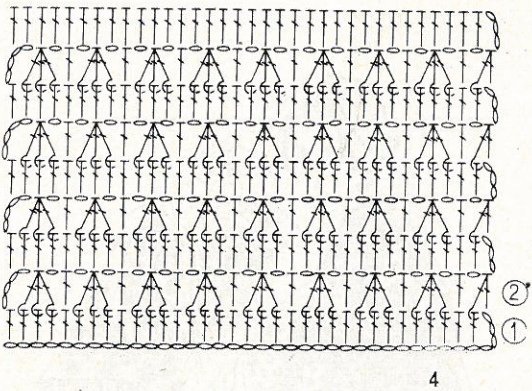
538



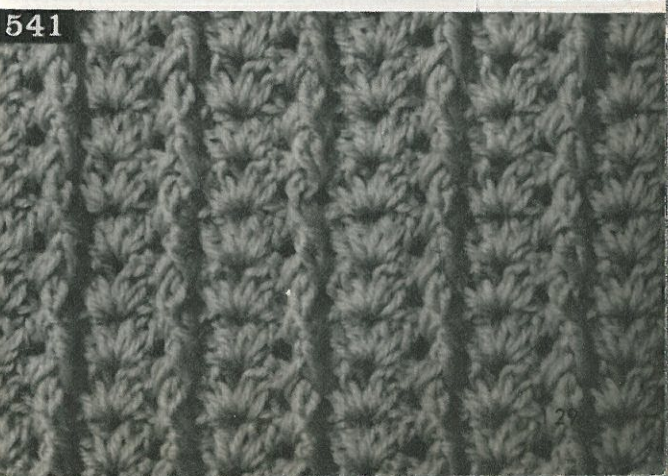
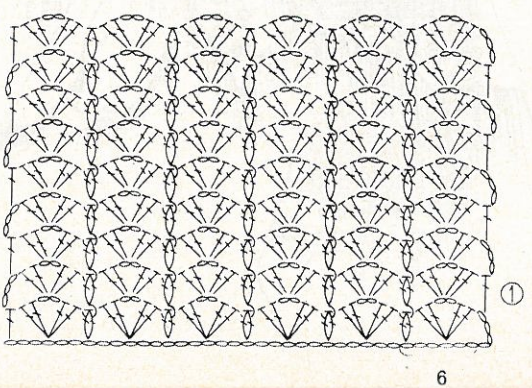
539



540



541

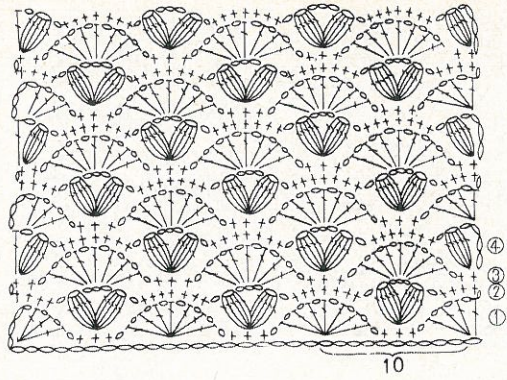




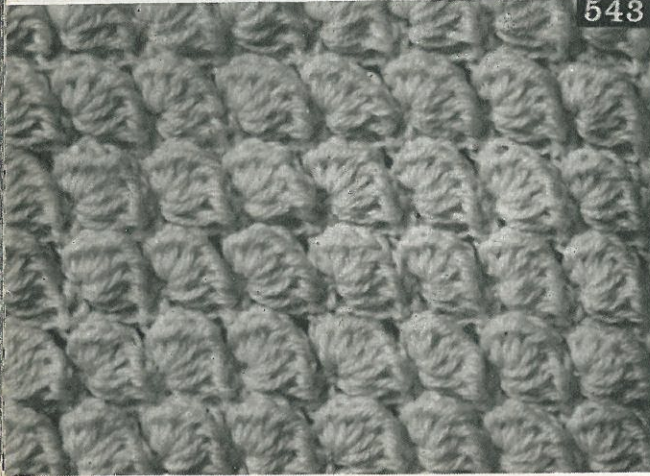


542

542

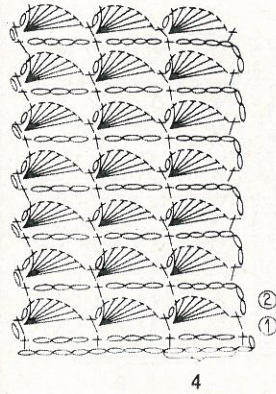


10



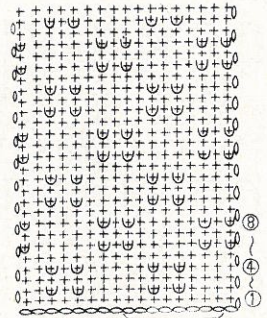
543

543

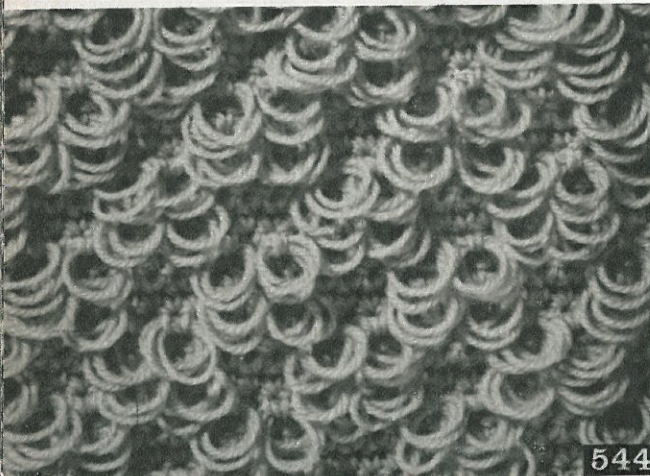


4

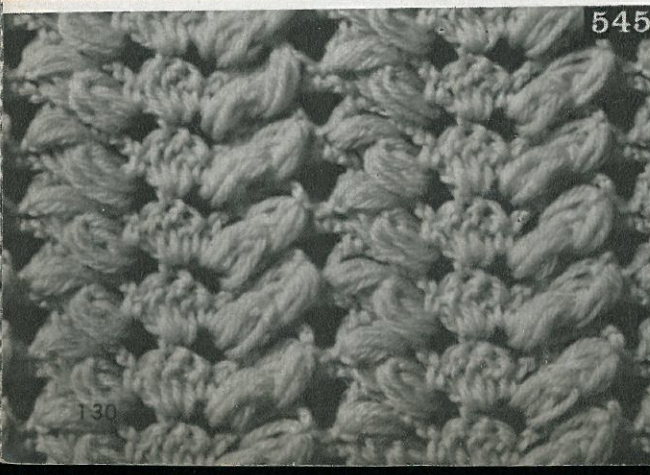
544 3 m. a p.to pelliccia



8



544

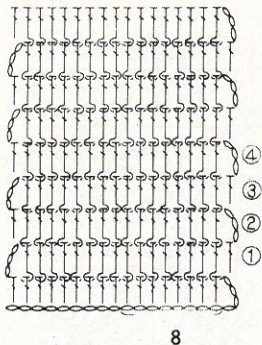


545

545 Ved. dis. a pag. 225

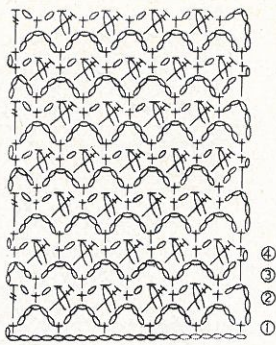


546



8

547

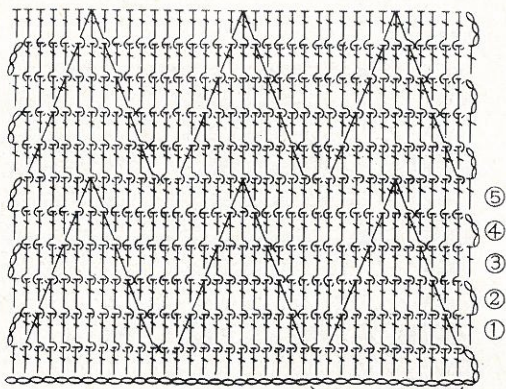


4

546



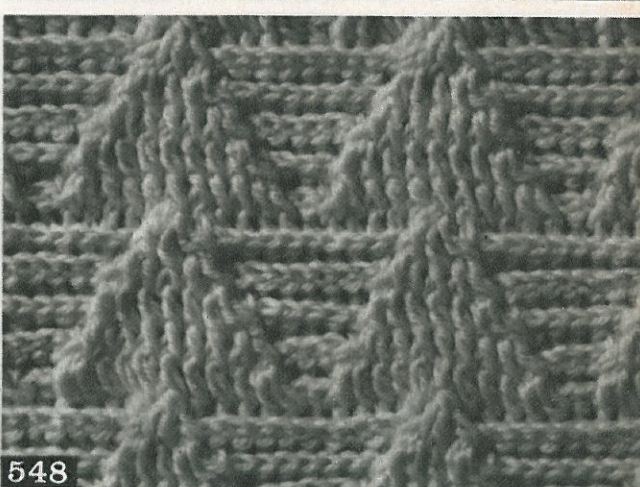
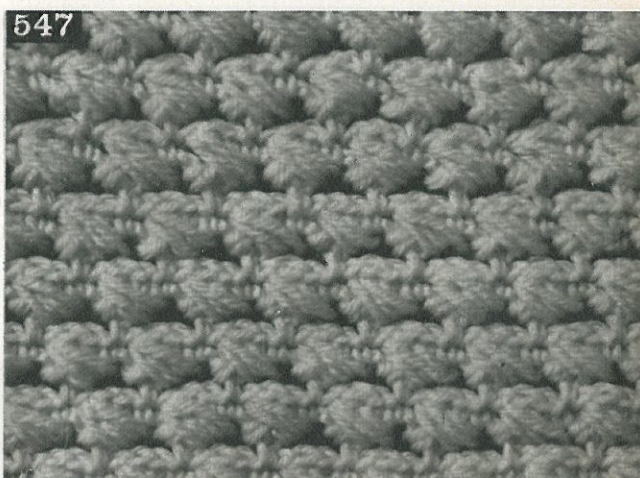
548



12

549 Ved. dis. a pag. 225

547



548

549

