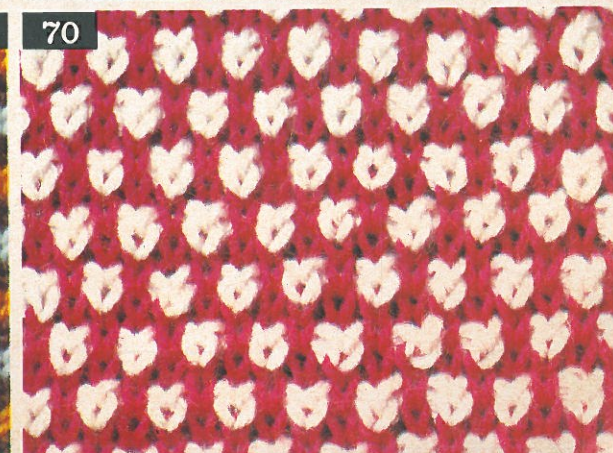
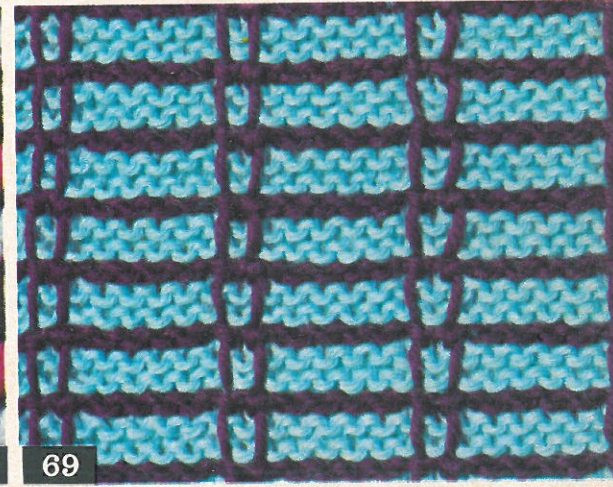
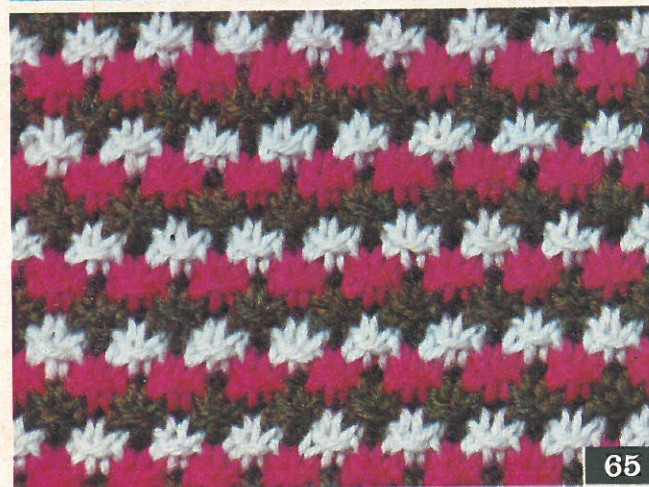
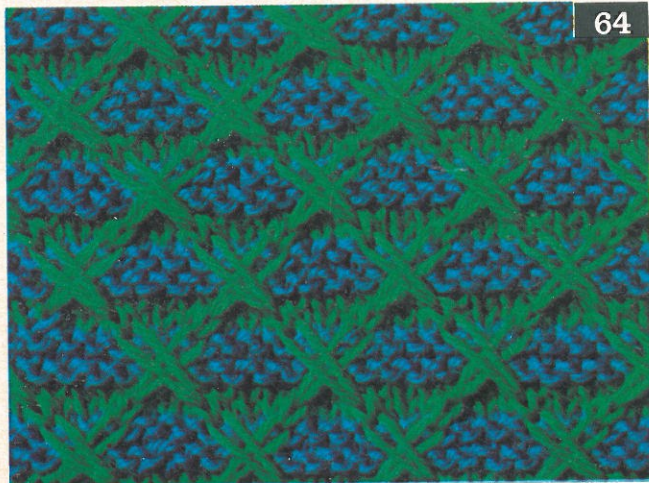
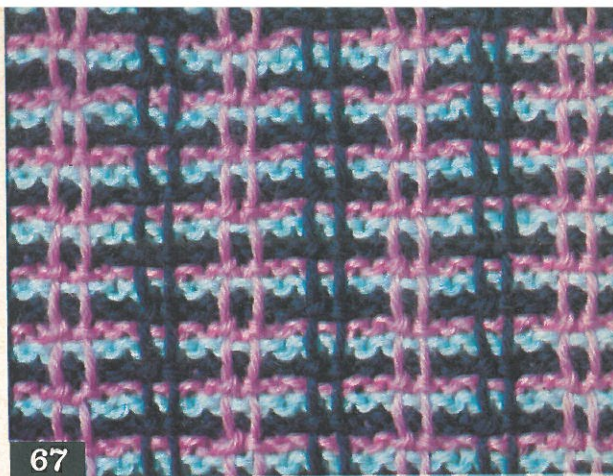


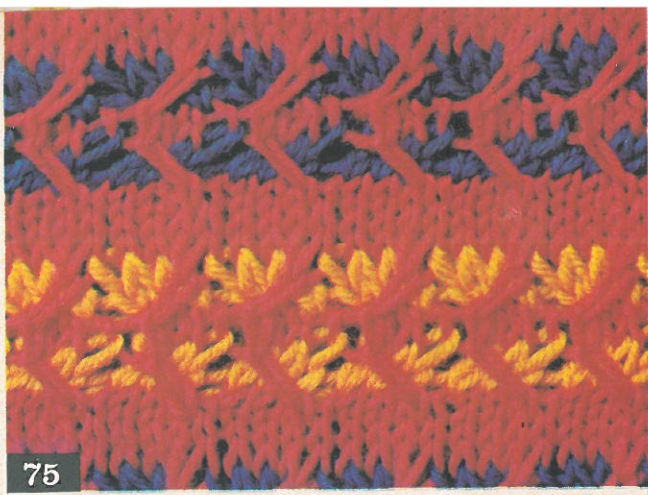
# ALCUNE IDEE A COLORI AI FERRI

ved. spiegazioni  
da pag. 218 a 220





71



75



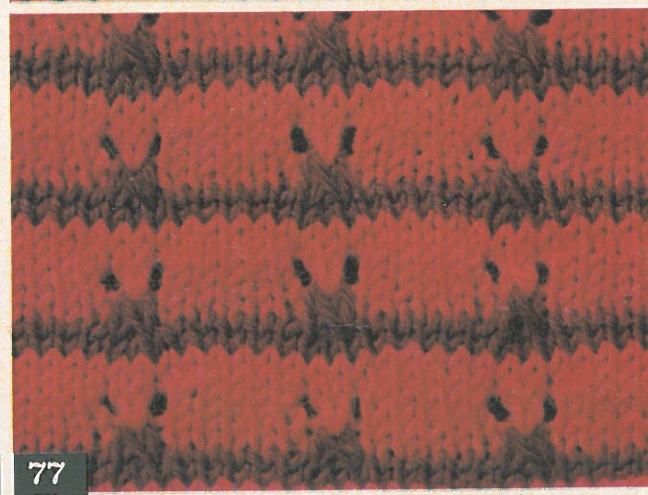
72



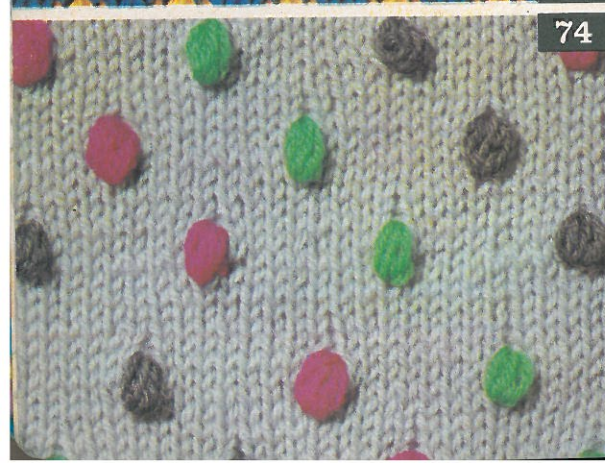
76



73



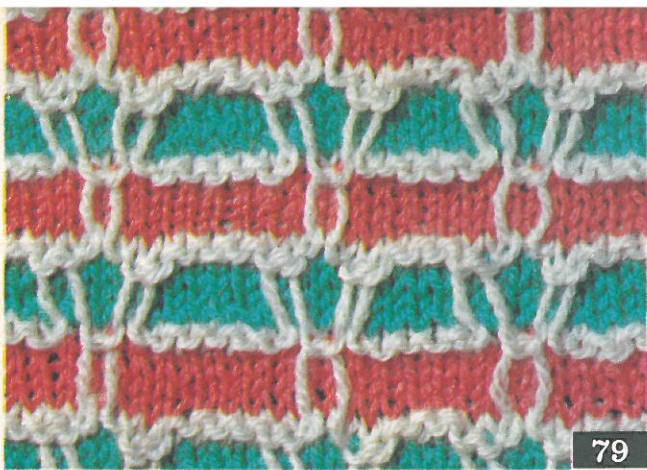
77



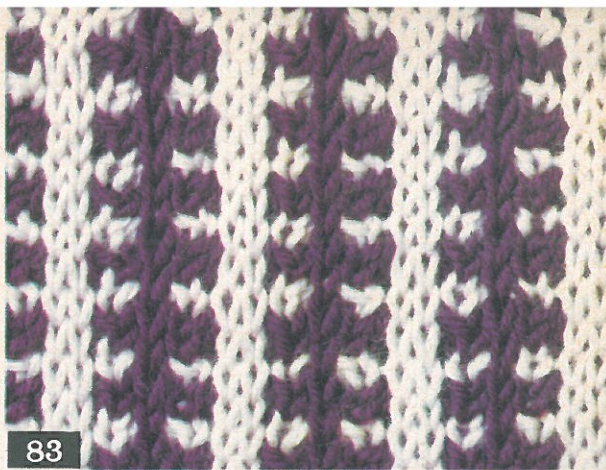
74



78



79



83



80



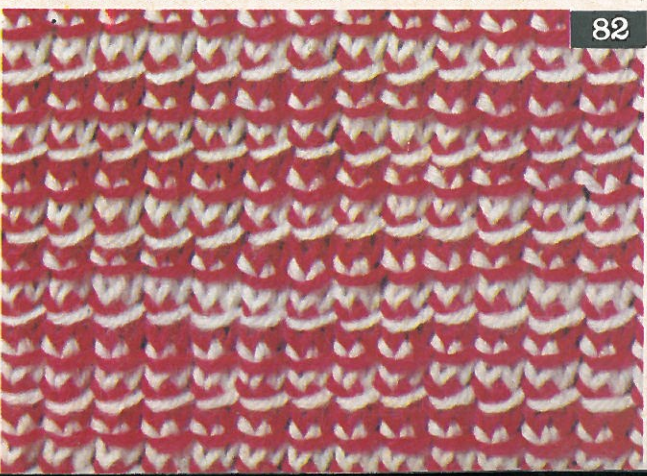
84



81



85



82



86



87



91



88



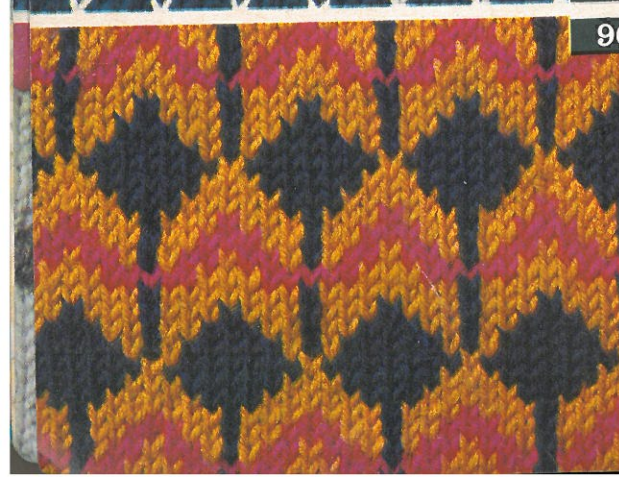
92



89



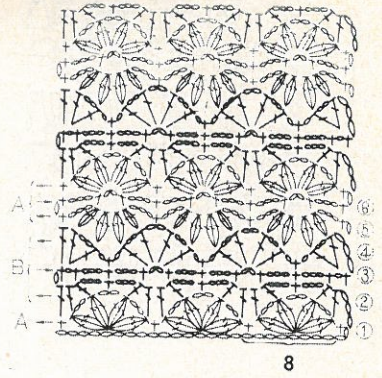
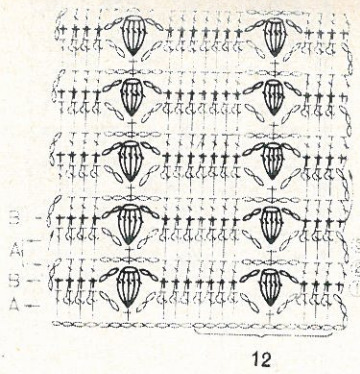
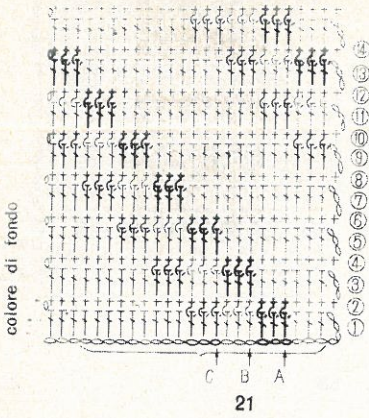
93



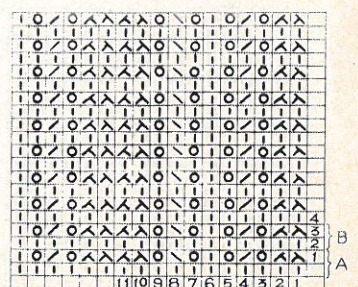
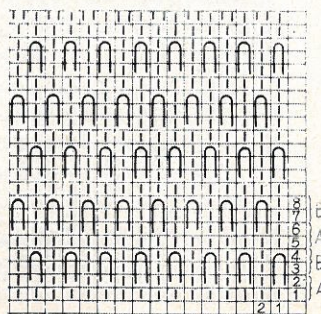
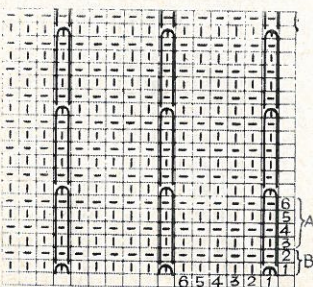
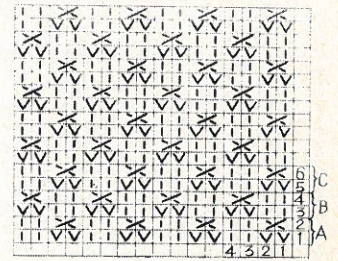
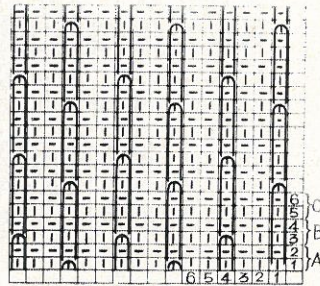
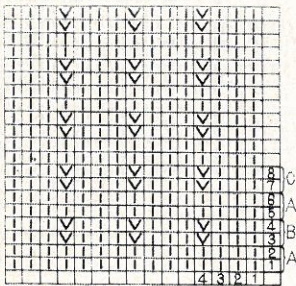
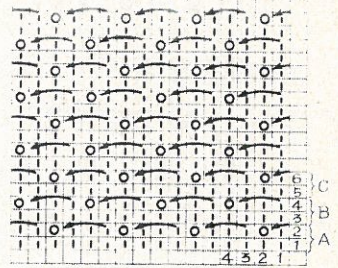
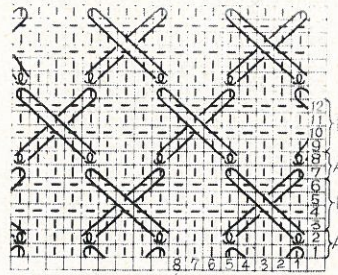
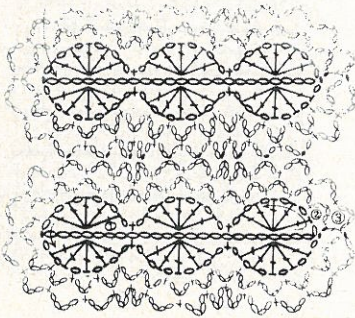
90



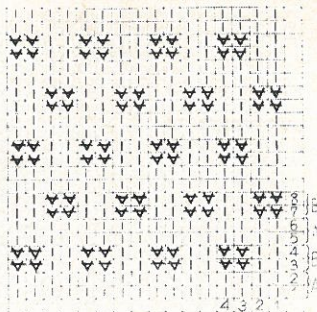
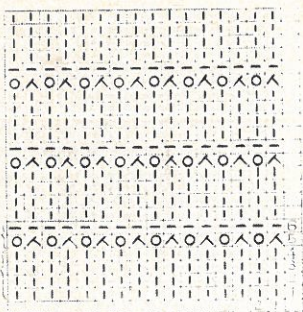
94



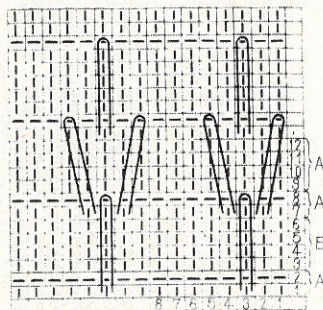
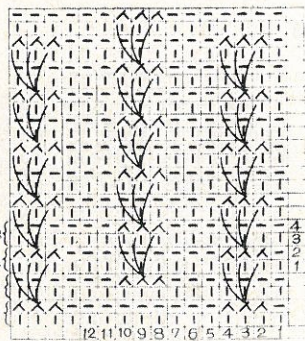
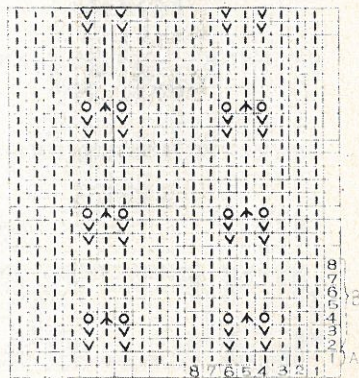
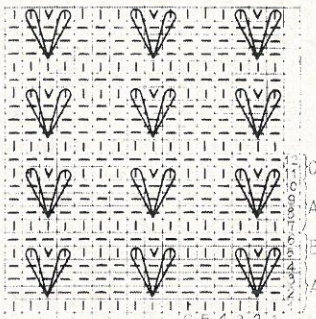
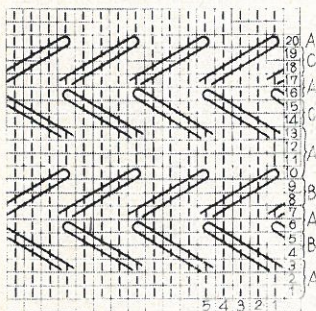
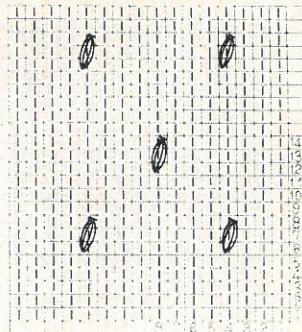
linea sottile = colore A  
 inizio linea grossa = colore B



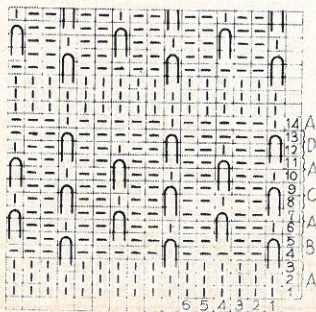
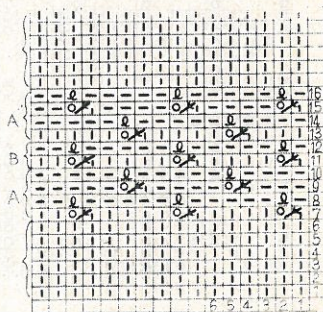
colore del dis.  
colore di fondo



p.to soffiato di 4 mezze m. alte con 1 filo di colore



= dopo aver lavorato 1 m. al dritto, fare 1 pallina di 5 m. sul ferro destro



Passare il filo davanti alle 2 m. e lavorarle al dritto

