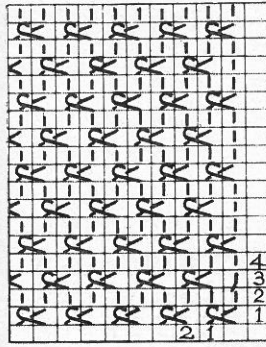
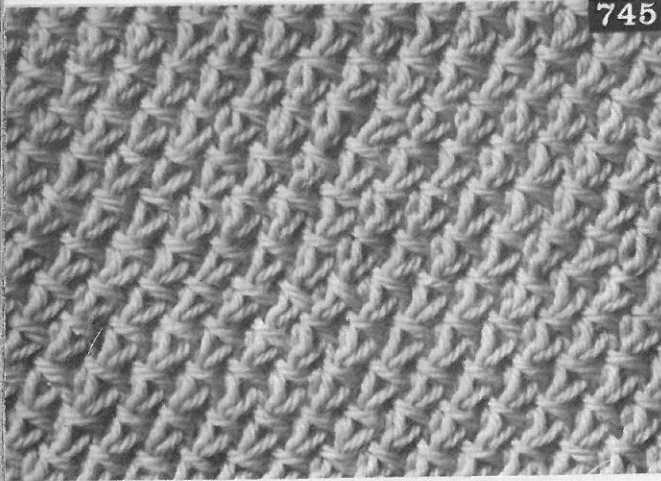
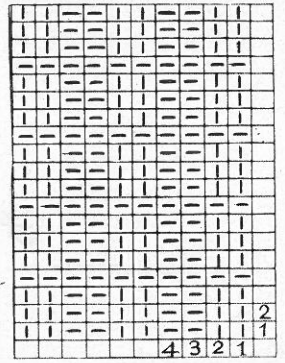


PUNTI OPERATI AI FERRI

745

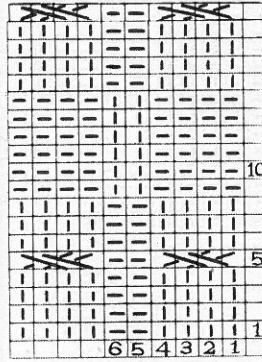


746

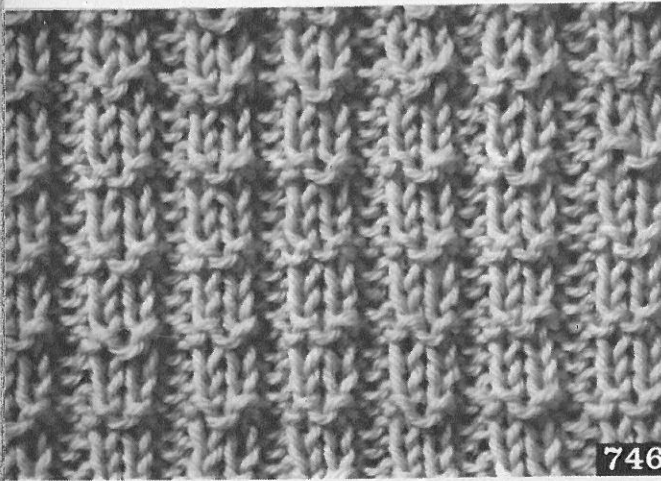
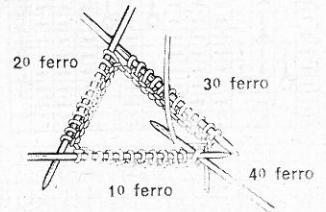


745

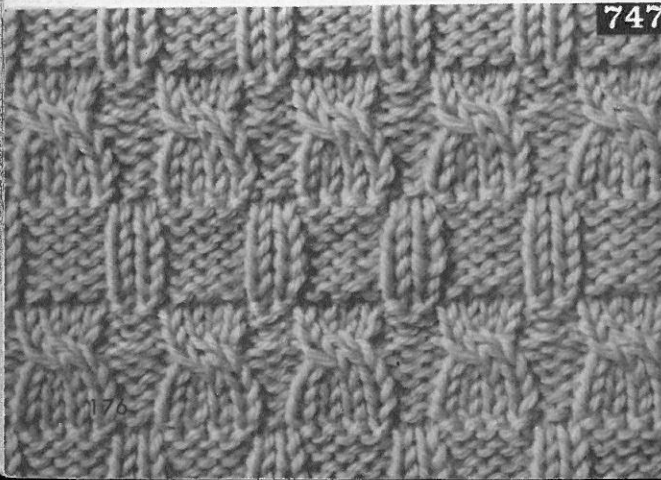
747



LAVORO IN TONDO



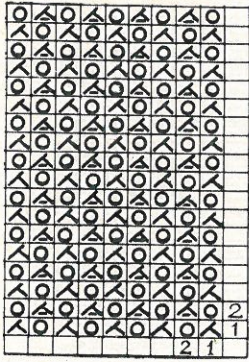
746



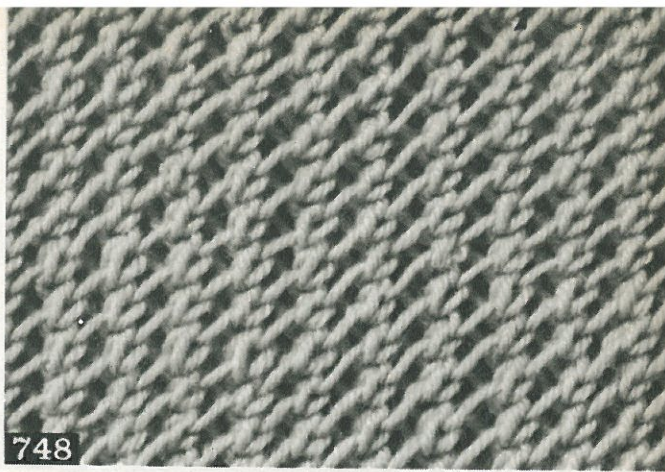
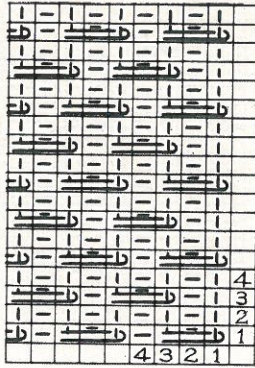
747



748

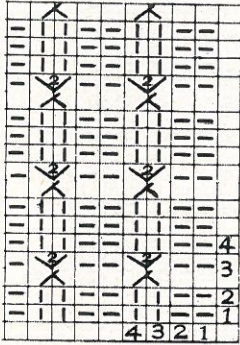


749

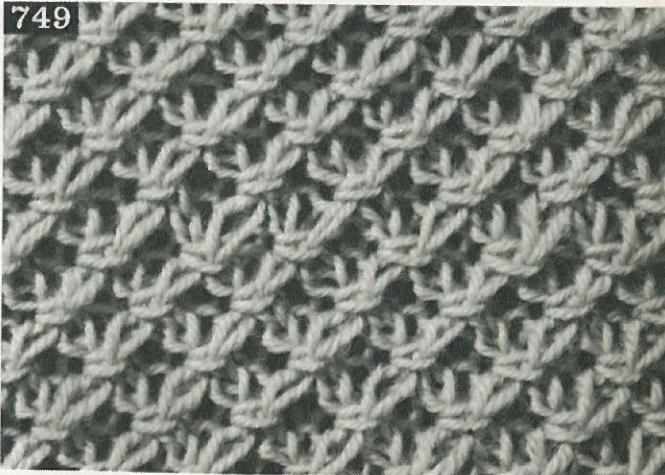
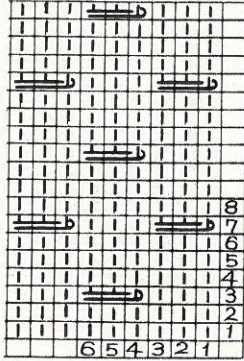


748

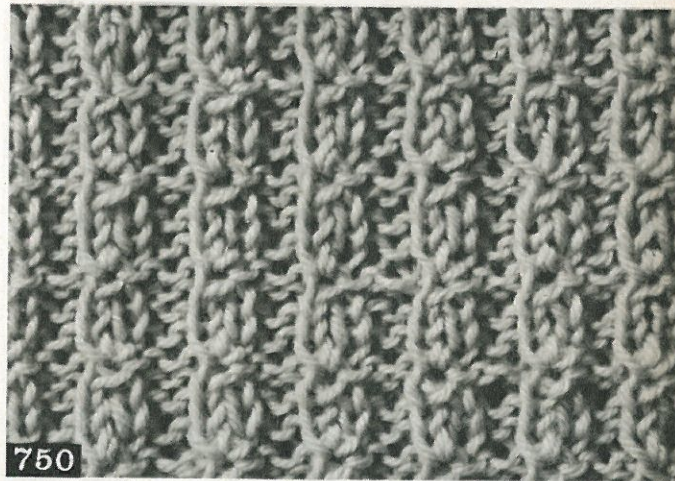
750



751



749

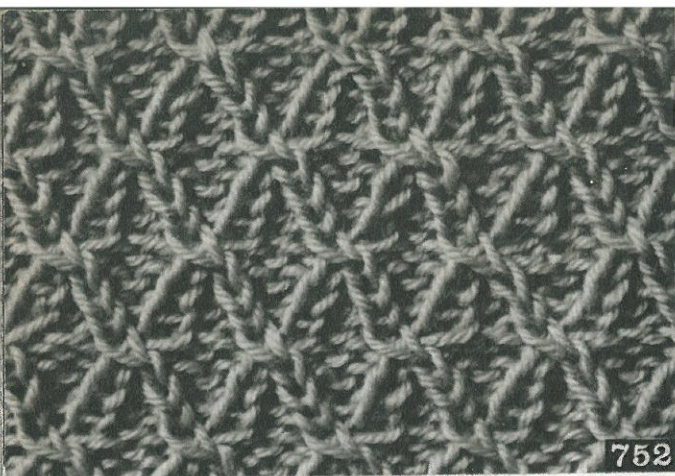


750

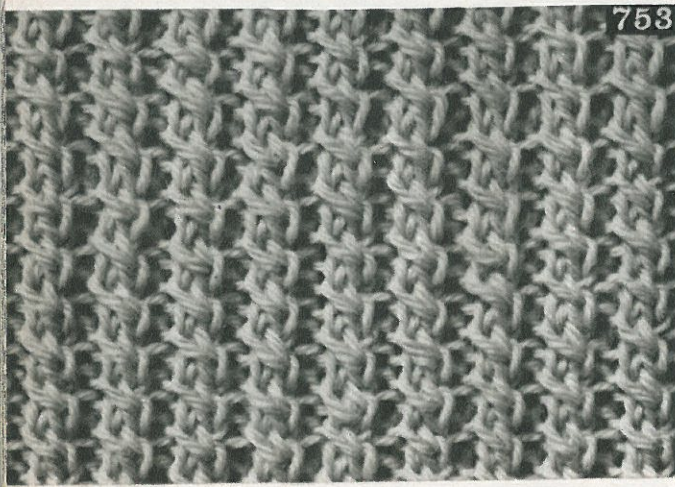
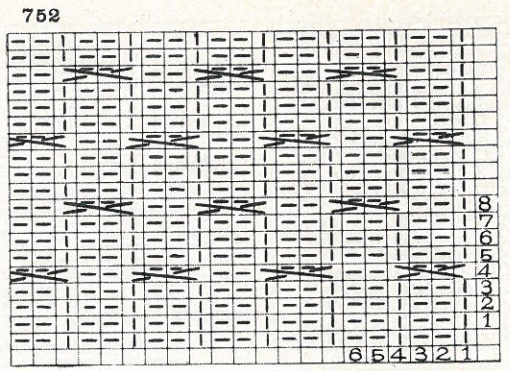


751

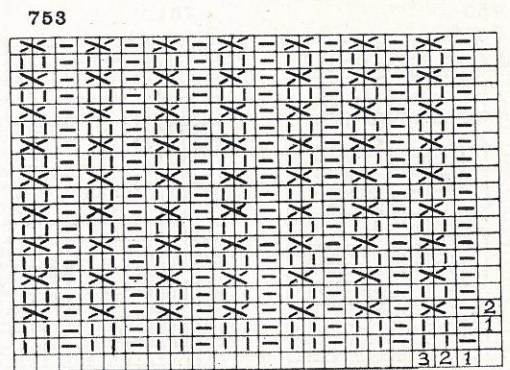




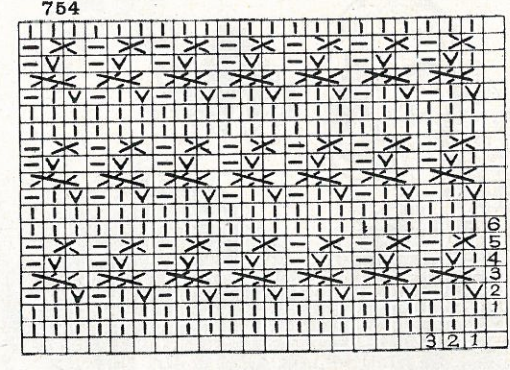
752



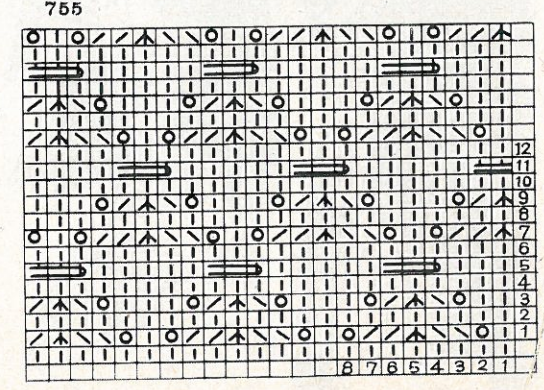
753



754

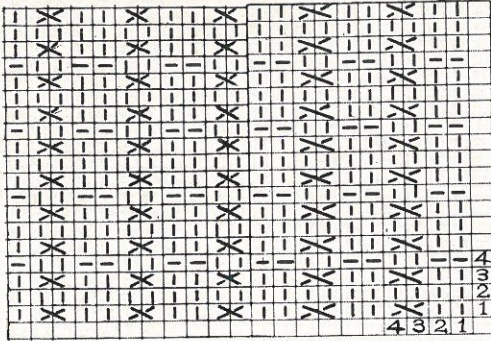


755



La spiegazione dei segni usati in questi dis. si trova da pag. 231 a pag. 242.

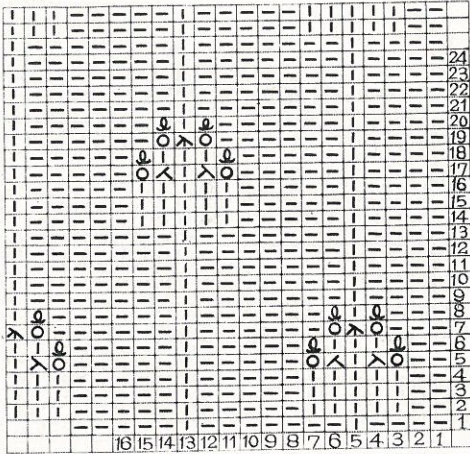
756



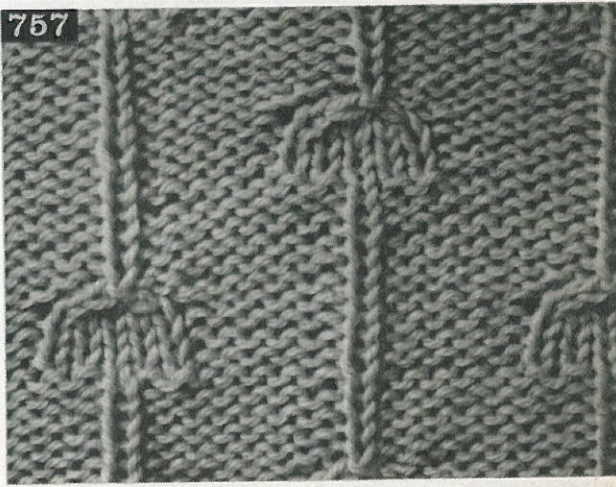
756



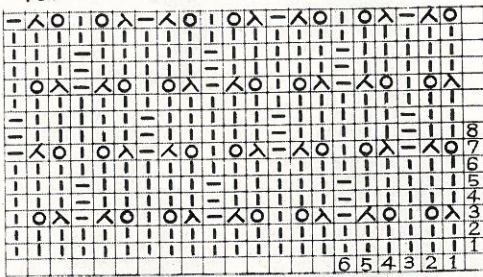
757



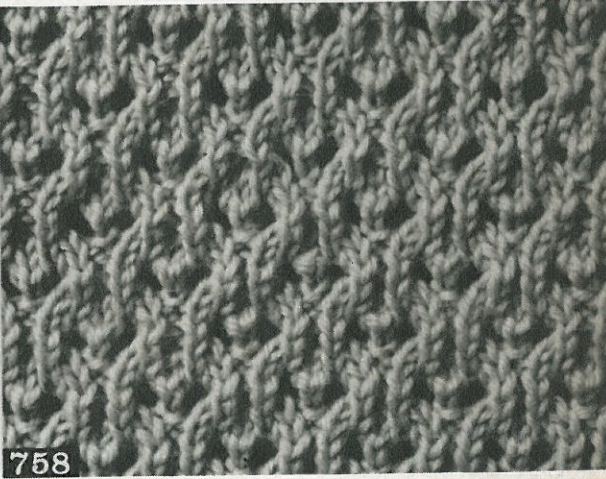
757



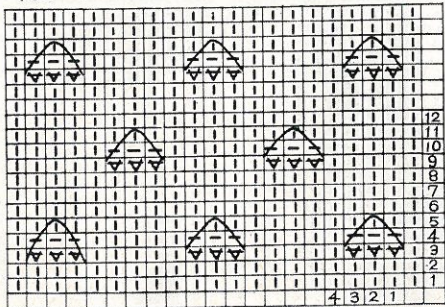
758



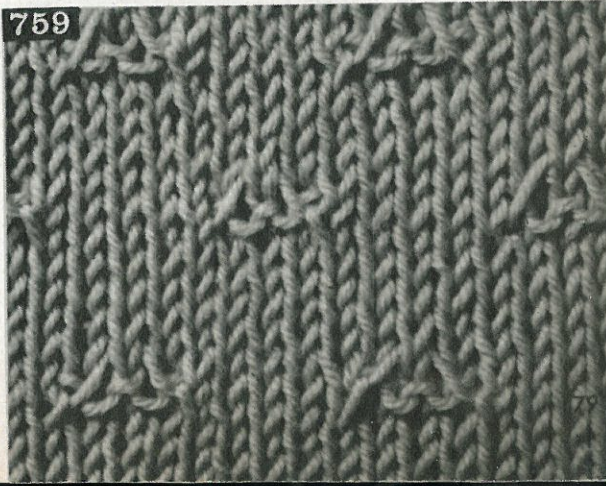
758



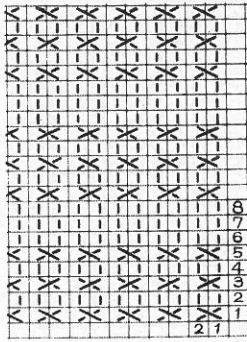
759



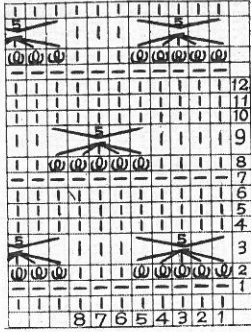
759



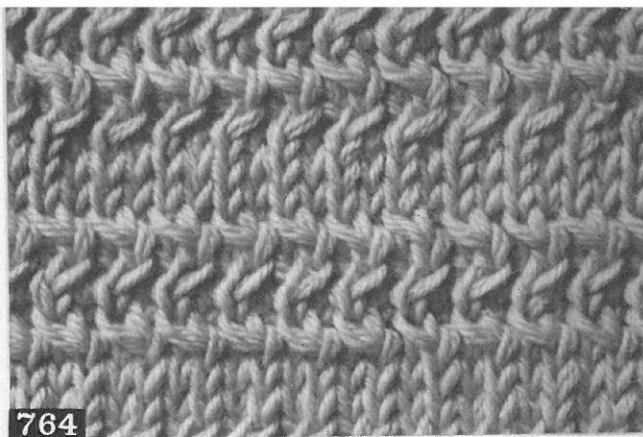
764



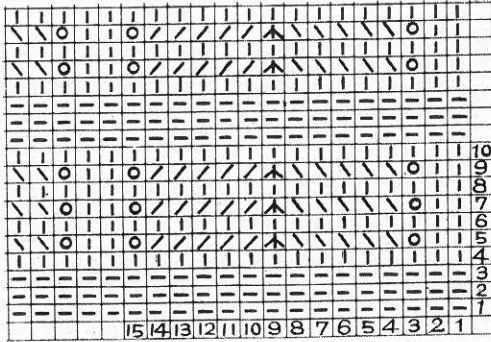
765



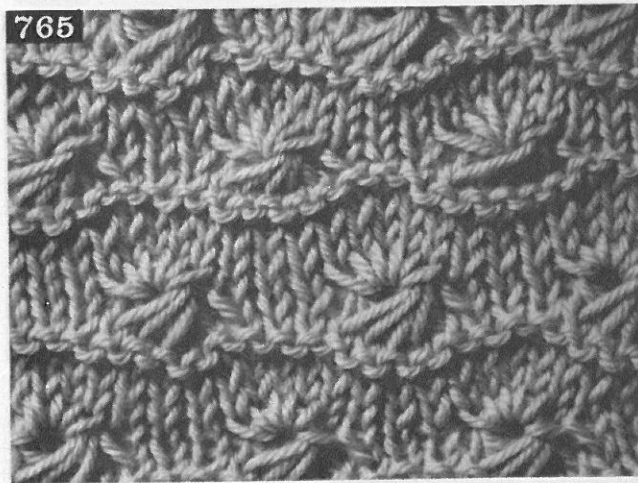
764



766



765

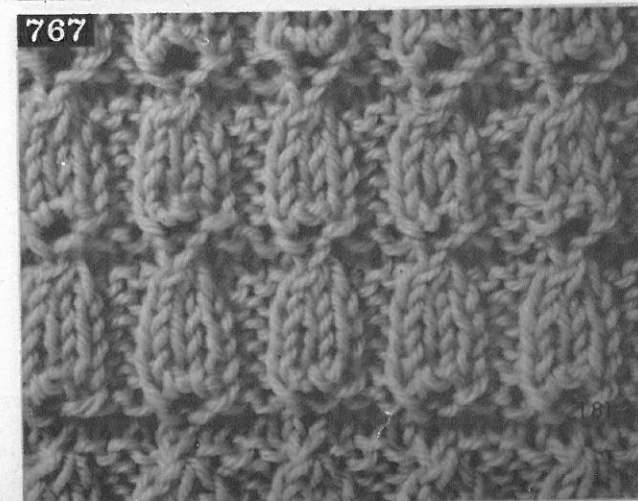
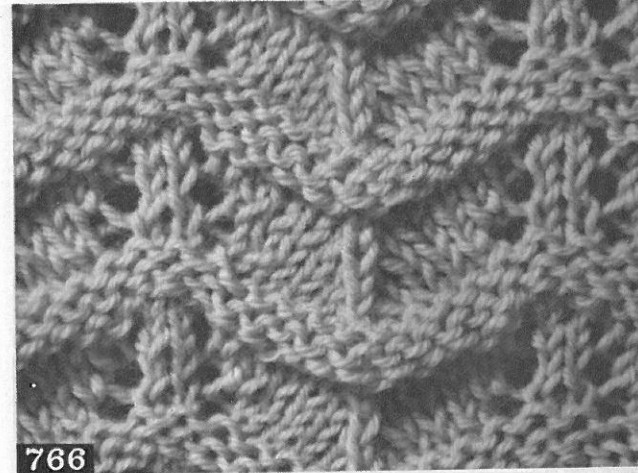


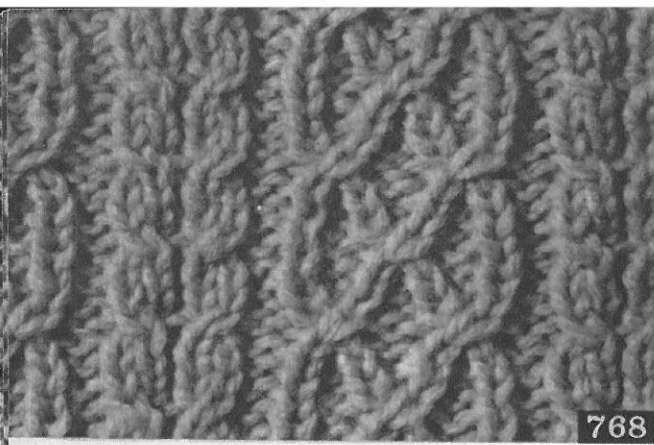
767 Ved. dis. a pag. 226



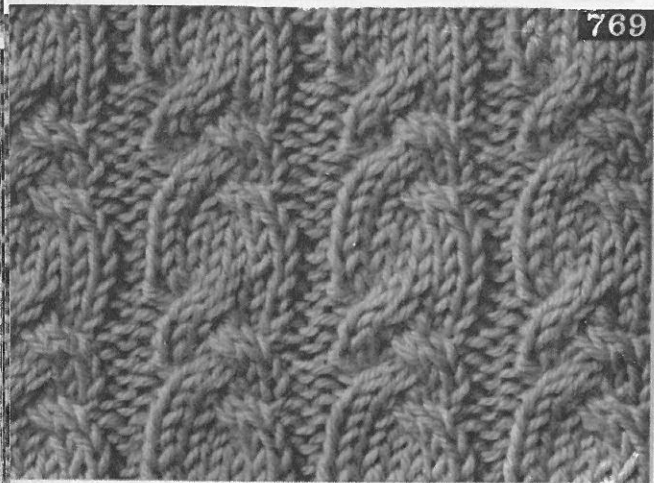
766

767

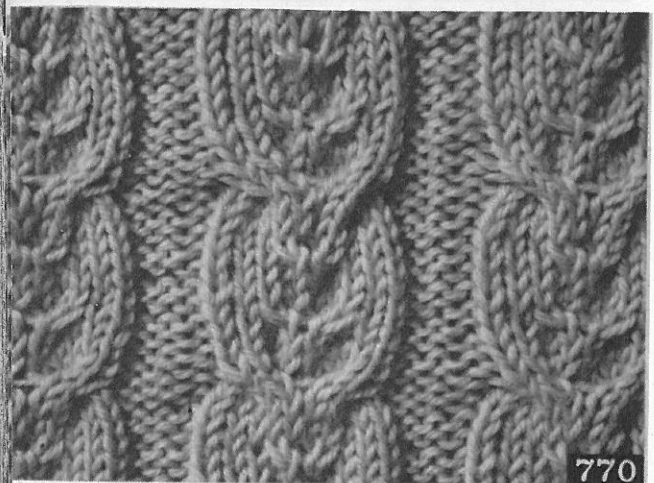




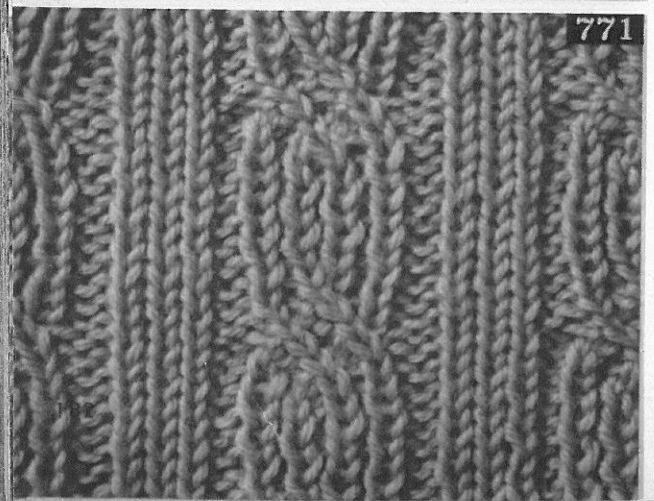
768



769

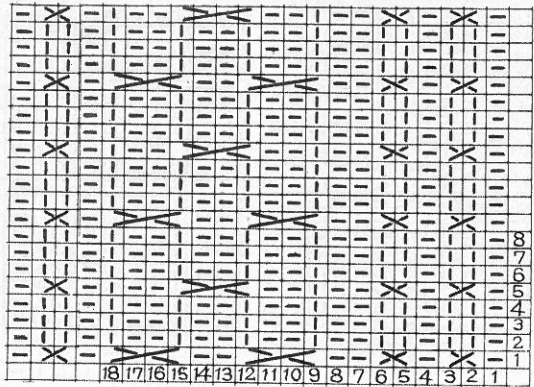


770

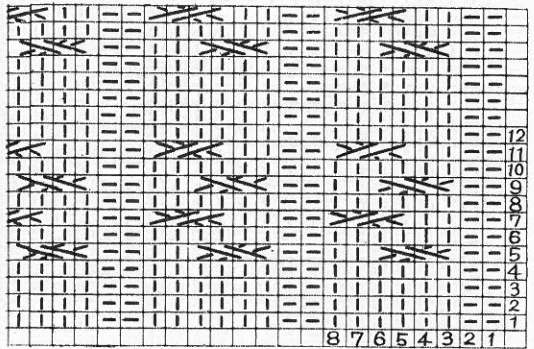


771

768



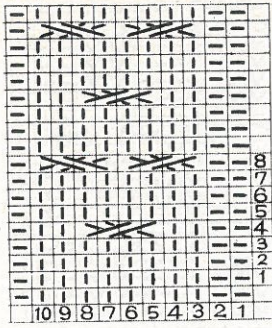
769



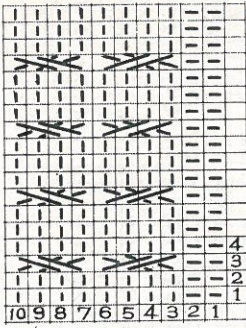
770 · 771 Ved. dis. a pag. 226



772

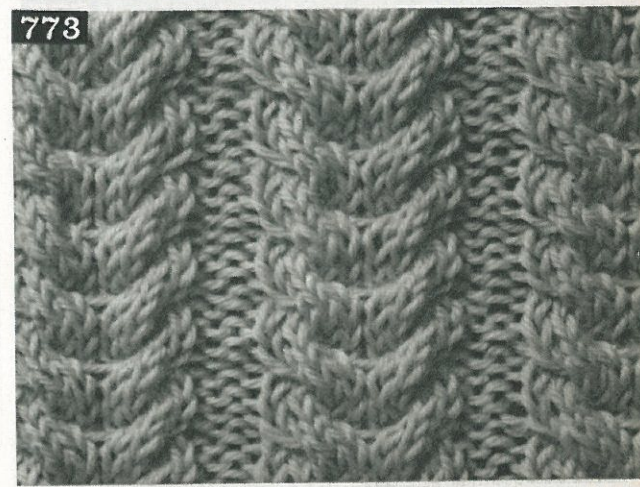
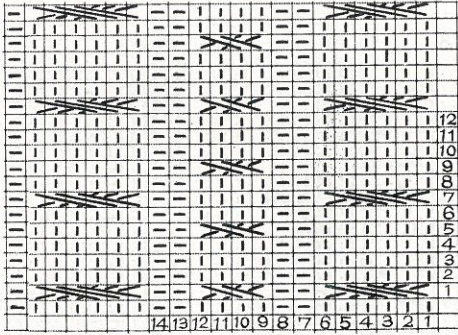


773



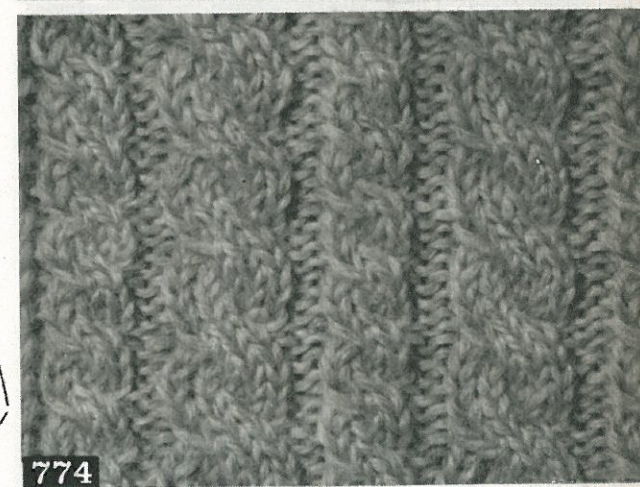
772

774



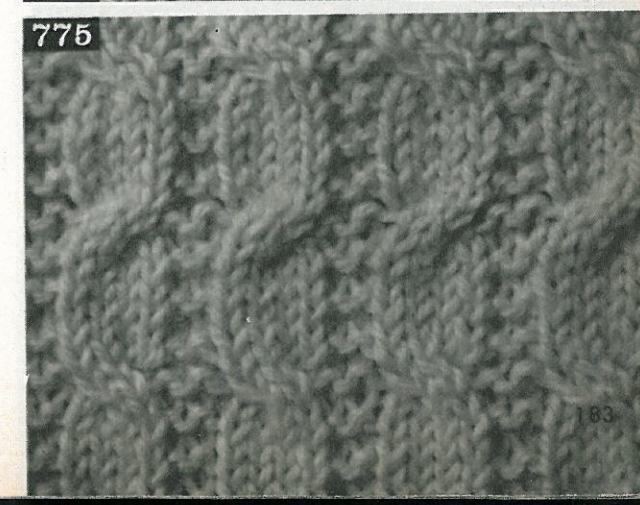
773

775 Ved. dis. a pag. 226



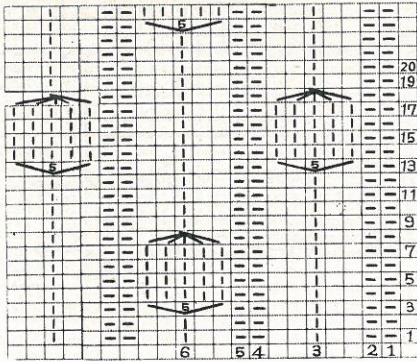
774

775



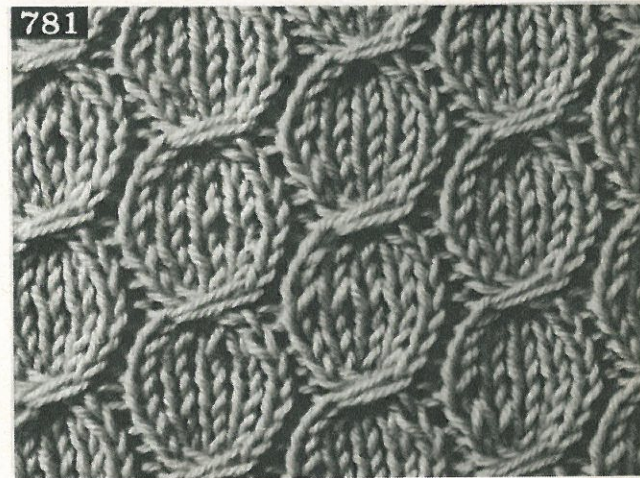
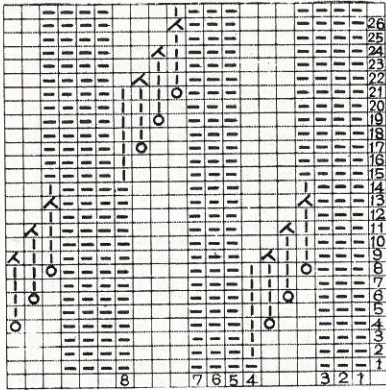
Scivolare 1 m., lavorare le 4 m. succ. insieme e accavallare la m. scivolata sulle 4 m. lavorate ins.

782



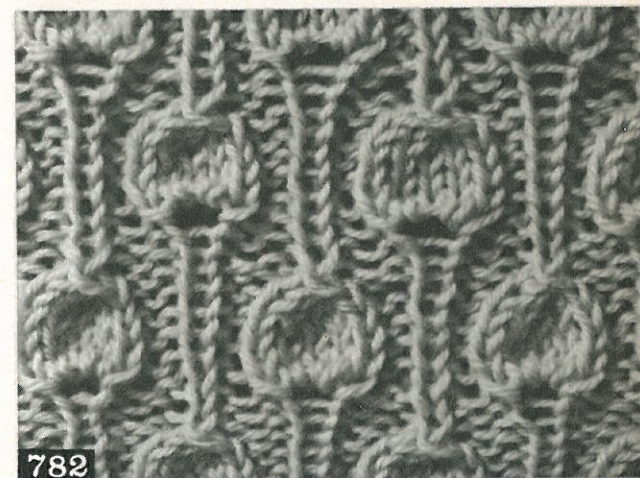
780

783

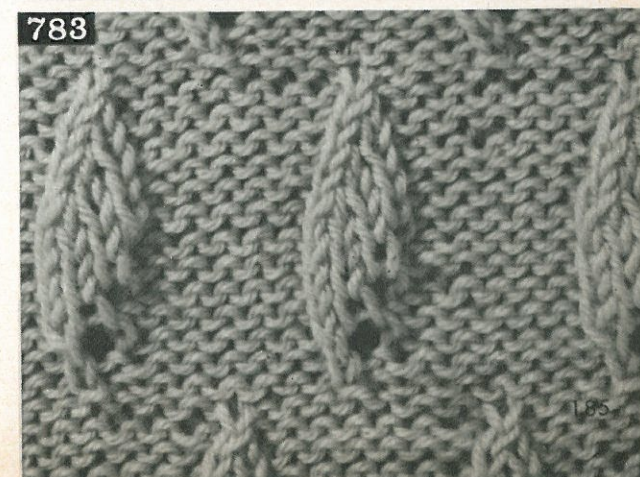


781

780 · 781 Ved. dis. a pag. 226



782



783